

The
Corning
Museum
of Glass
Annual
Report
2011



YEARS

Officers

James B. Flaws
Chairman of the Board

E. Marie McKee
President

James R. Houghton
Vice President

Denise A. Hauselt
Secretary

Linda E. Jolly
Assistant Secretary

Mark S. Rogus
Treasurer

Robert J. Grassi
Assistant Treasurer

Karol B. Wight
Executive Director

Trustees

Roger G. Ackerman*
Peter S. Aldridge
Van C. Campbell*
Dale Chihuly*
Jeffrey W. Evenson
James B. Flaws
Ben W. Heineman*
Amory Houghton Jr.*
Arthur A. Houghton III*
James D. Houghton
James R. Houghton
Thomas C. MacAvoy*
E. Marie McKee
Carl H. Pforzheimer III
Carlos A. Picón
Mark S. Rogus
Antony E. Snow
Wendell P. Weeks
Karol B. Wight

* Trustee Emeritus

The Fellows of The Corning Museum of Glass

Carole Allaire
Gary E. Baker
Renée E. Belfer
Robert A. Belfer
Mike Belkin
William W. Boeschstein*
Alan L. Cameros
Lt. Gen. Christian Clausen, retired
Simon Cottle
Kenneth C. Depew
Thomas P. Dimitroff
Jay R. Doros
David Dowler
Max Erlacher
Christopher T. G. Fish
Alice Cooney Frelinghuysen
William Gudenrath
Jiří Harcuba †
Douglas Heller
A. C. Hubbard Jr.
Lawrence Jessen
Kenneth L. Jobe †
Dorothy-Lee Jones †
Olive Jones †
Leo Kaplan
Helena Koenigsmarková †
Stephen P. Koob
Michael Kovacek
Dwight P. Lanmon †
Harvey K. Littleton
Louise Luther
Kenneth W. Lyon
Josef Marcolin
Gregory A. Merkel
Kirk J. Nelson †
Barbara H. Olsen
Elmerina L. Parkman
Paul D. Parkman
Paul N. Perrot †
John V. B. Perry
Joan P. Randles
Richard F. Randles
Peter Rath
Rachel Russell
Prof. Dr. Axel von Saldern †
Josh Simpson
John P. Smith
Jean Sosin
Walter Spiegl †
Paul J. Stankard
Prof. Dr. Rudolf von Strasser
Lino Tagliapietra
Catherine M. V. Thuro-Gripton †
Kenneth R. Treis
Harley N. Trice
Deborah Truitt
David Watts
David B. Whitehouse
Karol B. Wight
Rainer Zietz
Maris Zuika

* Life Fellow

† Honorary Fellow

The Fellows of The Corning Museum of Glass are among the world's leading glass collectors, scholars, dealers, and glassmakers. The objectives of this organization are (1) to disseminate knowledge about the history and art of glassmaking and (2) to support the acquisitions program of the Museum's Rakow Research Library. Admission to the fellowship is intended to recognize accomplishment, and is by invitation.

Photo Credits

All of the photographs in this *Annual Report* are by The Corning Museum of Glass (Nicholas L. Williams, Andrew M. Fortune, Allison S. Lavine, Dara C. Riegel, and Yvette M. Sterbenk), with the following exceptions:

Pages 4 (bottom), 6, 12 (right), 14 (right), 15–18, 21 (top), 34, and 43:

Photo by Gary Hodges

Page 33 (bottom):

Photo by Josh Simpson



The
Corning
Museum
of Glass
Annual
Report
2011

An educational institution
dedicated to the history,
art, and science of glass

Chartered by the Board
of Regents of the University
of the State of New York
April 27, 1951
(6026)

Accredited by the American
Association of Museums
1973, 1986, 1999, 2010



The Year in Review

For the ancient Romans, Janus was the god of beginnings and endings. He was frequently depicted in works of art as a bearded, double-faced head, looking both forward and backward. For The Corning Museum of Glass, 2011 was also a year of beginnings and endings, and of looking both backward and forward. The year marked the 60th anniversary of the institution, and much of 2011 was spent in celebration of that event.

Every good birthday party starts with a remembrance of an auspicious birth. In the case of The Corning Museum of Glass, it began with the 100th anniversary of the Houghton family's entrance into the business of glass-making. The senior members of Corning Glass Works (now Corning Incorporated) had developed a lengthy strategy to celebrate the centennial. But Arthur Houghton, president of Steuben at the time, said: "No. . . . Let's mark our 100th birthday by giving something back. . . . We have prospered, . . . we employ a lot of people, we really built this town, and let's say thank you. Let's not celebrate ourselves. Let's celebrate the material that made it possible." And the physical manifestation of this celebration of glass, the material that made the company possible, was the founding of our Museum, which opened its doors to the public on May 19, 1951. During the opening ceremonies, the senior personnel described the

Museum as a gift to the nation, and thus it has remained.

Like Corning Incorporated, the Museum has been continuously giving back. For 60 years, the Museum has been a cultural treasure for the world and an economic treasure for our region. In 2011, almost 400,000 people from all over the world passed through our doors, coming from such places as China, India, Israel, and (more regionally) Buffalo, Syracuse, and right here in Corning. About 11,300 school-children came to the Museum, admission-free, on field trips. Thousands of people attended free artists' lectures and such special events as 2300°.

Over the years, the Museum has presented groundbreaking exhibitions, published highly respected books and journals, built a world-class collection and library, brought the art of glassmaking to life here and around the world through hot-glass programs, and provided glassworking instruction to tens of thousands of people through programs and classes at The Studio.

And the Museum continues to grow, reaching more and more people through digital channels such as its Web site and mobile applications, through increased scholarships to The Studio, through its mobile hot shop, through curators' lectures and writings, and through public programs.

E. Marie McKee (left), president, and David Whitehouse (right), executive director, welcome Bruce and Anna Howett of Hillsboro, Ohio, as the first visitors on May 19, the 60th anniversary of the Museum.





A selection of gas and electric lamps on display in the exhibition "Mt. Washington and Pairpoint: American Glass from the Gilded Age to the Roaring Twenties."

The Museum has undergone several major upgrades in its 60 years. The first was brought about by the disastrous 1972 flooding of the Chemung River, which extensively damaged both the glass collection and the library's holdings. A new building designed by Gunnar Birkerts opened on May 28, 1980, and elevated both the library and the glass collection above dangerous flood levels. The second expansion began in 1996 with the building of The Studio, which broadened the Museum's campus across the parking lot to the west of the Museum. The Museum building itself also underwent dramatic change according to a design by Smith-Miller + Hawkinson, which was completed in 2001. This included the creation of a Hot Glass Show theater and a new auditorium, as well as the renovation of the former Corning Glass Center into new retail spaces and an expanded café. It also included a wonderful new science area called the Glass Innovation Center, with exhibits designed by Ralph Appelbaum Associates.

But what is most impressive about all of these achievements is the high level of quality with which each exhibition, book, class, public program, or architectural expansion is accomplished. A look through the list of professional activities in this volume clearly points out the diversity and international presence of the Museum's staff. Our attention to quality is what

sets the institution apart, and has led to the ongoing and unwavering support of Corning Incorporated for the past 60 years.

On May 19, a birthday celebration was held at the Museum that included free admission, extended hours, and special activities around the campus. The Board of Trustees was present to enjoy the occasion, as well as to mark the opening of 2011's special exhibition: "Mt. Washington and Pairpoint: American Glass from the Gilded Age to the Roaring Twenties."

Mt. Washington and its successor, the Pairpoint Corporation, was one of America's longest-running luxury glass companies (1837–1957), one that rivaled its better-known contemporaries, Tiffany and Steuben. It constantly reinvented and reinvigorated its business through creativity in texture, decoration, pattern, and color—developing a variety of techniques that were so complex that few of them are practiced today. The exhibition featured 169 objects, of which 63 were from the Museum's permanent collection and 106 were lent by private collectors and other institutions. The exhibition was curated by Jane Shadel Spillman, the Museum's curator of American glass, and was accompanied by a publication titled *Mt. Washington and Pairpoint Glass, Volume 2*, written by Spillman and Kenneth M. Wilson. This volume continued the history of the company that began with Volume 1, published by



Martins-pêcheurs sur fond de roseaux (*Kingfishers on a background of reeds*), cast (*cire perdue*). René Lalique (French, 1860–1945), France, Wingen-sur-Moder, R. \, 1930. H. 26.3 cm, D. 32.1 cm (2011.3.188). Gift of Stanford and Elaine Steppa.

The glass artist Ann Gardner and her husband, Mitchell Karton, stand alongside *Five Pods*, the Museum's 2011 Rakow Commission (see page 9).

Wilson in 2005. The exhibition also provided the theme for our annual Seminar on Glass, held in October. Over the course of three days, seminarians enjoyed presentations by more than a dozen speakers on topics related to Mt. Washington and Pairpoint glass. This year marked the 50th anniversary of Seminar, and

we were pleased to note how much repeat attendance we have had over the years, including some participants who have been at Seminar more than 30 times.

The Museum housed five other exhibitions in 2011, including the continuation of “East Meets West: Cross-Cultural Influences in Glass-making in the 18th and 19th Centuries,” which opened in November 2010 on the West Bridge. At the Rakow Research Library, “Mirror to Discovery: The 200-Inch Disk and the Hale Reflecting Telescope at Palomar” told the remarkable story of the casting of this monumental piece of glass at Corning Glass Works, and its transport across the country. A focused exhibition on Toots Zynsky, one of our ongoing series of Masters of Studio Glass shows, was installed adjacent to the Ben W. Heineman Sr. Family Gallery of contemporary glass. We ended the year by starting the celebration of the 50th anniversary of the American Studio Glass movement with two exhibitions on the founders of the movement. These shows, saluting the achievements of Harvey K. Littleton and Dominick Labino, are installed on the West Bridge and in the Rakow Research Library respectively.

The collection continues to grow in significant ways. More than 1,175 works were added to our holdings through purchases and



donations. Important gifts were made at the end of 2011 by Stanford and Elaine Steppa, who donated their extensive collection of about 400 Lalique works to the Museum, and by Dorothy-Lee Jones, a longtime institutional friend and donor, who gifted works of American glass, some of which were included in the Mt. Washington exhibition. And in the area of contemporary glass, the 2011 Rakow Commission was awarded to the mosaic glass artist Ann Gardner. Her impressive work *Five Pods* now graces our galleries.

Our most significant acquisition in 2011 was a work designed in 1900 by Emile Gallé in collaboration with the painter and sculptor

Victor Prouvé. Titled *Les Hommes noirs* (The dark men), the vase represents a call for justice, for civil rights, and for the defense of the unjustly accused. It refers to the intense political, judicial, and social scandal that surrounded a French Jewish military officer named Alfred Dreyfus (1859–1935). The Dreyfus Affair (1894–1906) involved a wrongful conviction of treason and a subsequent cover-up that divided French society for over a decade. Prouvé’s design shows dark, monstrous creatures rising from the depths of the earth, which illustrate the evils of false accusation and anti-Semitism. In a letter to Prouvé, Gallé wrote that, with *Les Hommes noirs*, he aimed to expose “fanaticism,



Les Hommes noirs (The dark men), cased, blown, marqueterie, engraved, acid-etched; applied handles. Emile Gallé (French, 1846–1904) and Victor Prouvé (French, 1858–1943), France, Nancy, Cristallerie d’Emile Gallé, 1900. H. 38.1 cm, D. 32.1 cm (2011.3.1). Purchased in part with funds from the Houghton Endowment Fund; James B. Flaws and Marcia D. Weber; Daniel Greenberg, Susan Steinhauer, and The Greenberg Foundation in honor of Natalie G. Heineman and Ben W. Heineman Sr.; James R. and Maisie Houghton; Ben W. Heineman Sr. Family; E. Marie McKee and Robert Cole Jr.; Elizabeth S. and Carl H. Pforzheimer III; and Wendell P. Weeks and Kim Frock Weeks.



“Sky’s the Limit,” February’s 2300° event, features demonstrations by the glassblower and mixed-media installation artist Therman Statom.

hatred, lies, prejudice, and hypocrisy.” Works such as this, with an intense association with historical events, are few and far between, and we are especially pleased that we were able to add this example to the Museum’s collection.

May 24 marked the announcement that Dr. David Whitehouse, the Museum’s executive director since 1999, would be taking on a new role within the institution, that of senior scholar, and that I would be arriving in August to assume my new duties as the next executive director, the first woman in the Museum’s history to hold this position. During his 27 years at the Museum, Dr. Whitehouse has contributed to significant institutional advancement, expanding its collections by more than 40 percent and leading the renovation/expansion that was completed in 2001. In his role as curator of ancient and Islamic glass, he has published 15 volumes and organized nine exhibitions. Like Dr. Whitehouse, I am a scholar of ancient glass, and when the opportunity presented itself to come to Corning and to work with the magnificent collections here, I felt exactly like a kid in a candy shop. Dr. Whitehouse has left some large shoes to fill, but it is my intent to continue the outstanding programs, publications, and focus on scholarship that he has put in place.

Sixty years on, we continue to grow and evolve. Even during these economically challenging times, our visitation is growing. We continue to expand our international presence, reaching beyond the Museum’s walls through live streaming of onsite programs, a major Web site redesign, digitization of our collections, and innovative programs such as Glass-Lab and Glass at Sea. And, continuing the tradition begun by my predecessors, we look forward to the next expansion of The Corning Museum of Glass, which is scheduled to break ground in the spring of 2012. Through the continued support and generosity of Corning Incorporated, we are implementing a move into the spaces adjacent to the Museum at the north end of the building in order to create exciting and sorely needed new gallery spaces for the display of contemporary glass, as well as a larger theater for hot-glass demonstrations for our visitors. Working with Thomas Phifer and Partners, we anticipate that these new spaces will make a wonderful addition to our facility. Like the Roman god Janus, we look backward to a remarkable past, and forward to an exciting future.

Karol B. Wight
Executive Director

Ancient

Kohl tube, applied, marvered. Islamic, Egypt or the Levant, seventh or eighth century. H. 10.4 cm, D. (max.) 1.7 cm (2011.1.3).

Medallion with falconer, stamped. Islamic, Central Asia, 12th century. D. 9.1 cm (2011.1.1).

European

Drinking goblet and bell (so-called *Duk d'Alf* Bell, named after the duke of Alva), blown, mold-blown, tooled, applied, gilded. Low Countries, Antwerp, 1575–1600. H. 19.4 cm, D. 13.7 cm (2011.3.116).

Serving bottle, blown, tooled, applied. England, about 1690. H. 13.5 cm (2011.2.5).

Bottle in gold ruby glass, mold-blown, cold-worked, cut, engraved. Glass: Potsdam or southern Germany, about 1700; engraving attributed to a master in Nuremberg, Germany. H. 16.5 cm (2011.3.178).

“Winterfeldt” goblet, blown, hot-worked, diamond-point engraved. Germany, possibly Brandenburg, engraved by V. Swellengrebel (signed), about 1750–1760. H. 20.7 cm, D. 10.4 cm (2011.3.91).

Reverse painting depicting a rural tavern scene, glass, wood, metal mounts; painted, assembled. Germany, Darmstadt, Nikolaus Michael Spengler, 1760 (signed and dated). H. (without frame) 29.4 cm (2011.3.114).

Porphyry vase, blown, tooled; bronze mounts, white marble base. Germany, Berlin, design attributed to Karl Friedrich Schinkel, mounts by Werner and Mieth, about 1810. H. 34 cm, D. 27 cm (2011.3.177). Gift of the Ennion Society.

“Alhambra” vase, blown, mold-blown, cut, ground, drilled, gilded, assembled. Bohemia, Neuwelt, attributed to the Harrach glassworks, about 1862. H. 62 cm, D. 26.3 cm (2011.3.3).

Neo-Islamic bottle, blown, tooled, applied, enameled, gilded. France, Paris, Philippe-Joseph Brocard (signed), about 1865–1880. H. 55.3 cm, D. 27.3 cm (2011.3.97).

Japonisme vase, blown, tooled, applied, enameled, gilded. England, Amblecote, Thomas Webb and Sons, about 1880. H. 16.8 cm, D. (max.) 10 cm (2011.2.7).

Jardiniere, onyx glass, blown, tooled, gilded, assembled; gilt bronze mounts. Bohemia, Klostermühle, attributed to Johann Loetz Witwe, about 1890. H. 27.2 cm, W. 32.4 cm (2011.3.93).

Selected Additions to the Glass Collection*



Medallion with falconer, stamped. Islamic, Central Asia, 12th century. D. 9.1 cm (2011.1.1).

Bottle in gold ruby glass, mold-blown, cold-worked, cut, engraved. Glass: Potsdam or southern Germany, about 1700; engraving attributed to a master in Nuremberg, Germany. H. 16.5 cm (2011.3.178).



* For more information about many of these acquisitions, see *The Corning Museum of Glass: Notable Acquisitions 2011* (May 2012) or visit www.cmog.org.



Reverse painting depicting a rural tavern scene, glass, wood, metal mounts; painted, assembled. Germany, Darmstadt, Nikolaus Michael Spengler, 1760 (signed and dated). H. (without frame) 29.4 cm (2011.3.114).

Pitcher, blown, cut. U.S., probably P. C. Dummer & Company, Jersey Glass Company, Jersey City, NJ, about 1845–1855. H. 25.1 cm, D. 13.2 cm (2011.4.84).

Goblet with hunting scene, blown, engraved. U.S., probably Corning, NY, T. G. Hawkes and Company, engraved by William Morse, 1915–1921. H. 28 cm, D. 11.5 cm (2011.4.149). Gift of Dorothy-Lee Jones.

American

Pair of whale oil lamps, blown, pressed. U.S., East Cambridge, MA, New England Glass Company (signed), 1828–1835. H. 29.7 cm (2011.4.62A, B).

Pitcher, blown, cut. U.S., probably P. C. Dummer & Company, Jersey Glass Company, Jersey City, NJ, about 1845–1855. H. 25.1 cm, D. 13.2 cm (2011.4.84).

Tumbler, blown, engraved. U.S., East Cambridge, MA, New England Glass Company, engraved by Henry Barnes Leighton, 1855–1870. H. 9.1 cm, D. 8.3 cm (2011.4.21). Purchased with the assistance of the Karl and Anna Koepke Endowment Fund.

Tumbler in “Comet” or “Horn of Plenty” pattern, pressed. U.S., probably M’Kee Brothers, Pittsburgh, PA, 1860–1870. H. 7.8 cm, D. 6.6 cm (2011.4.88). Purchased with funds donated by the Martha J. Herpst and Mrs. Jason Westerfield Estates.

Vase, blown, cased, cut. U.S., Sandwich, MA, Cape Cod Glass Company, 1860–1870. H. 24.8 cm, D. 12 cm (2011.4.196). Gift of Dr. and Mrs. Maris Zuika in memory of Austra Zuika.



Peachblow lamp, blown, tooled. U.S., Wheeling, WV, Hobbs, Brockunier & Co., 1885–1891. H. 51.5 cm (2011.4.66).

Peach Blow ribbed bowl, blown. U.S., New Bedford, MA, Mt. Washington Glass Company, 1886–1895. D. 12.4 cm (2011.4.5). Purchased with funds from the Gladys M. and Harry A. Snyder Memorial Trust.

Royal Flemish vase, blown, enameled. U.S., New Bedford, MA, Mt. Washington Glass Company, 1888–1895. H. 35.9 cm, D. 15.6 cm (2011.4.4). Purchased with funds from the Gladys M. and Harry A. Snyder Memorial Trust.

Goblet with hunting scene, blown, engraved. U.S., probably Corning, NY, T. G. Hawkes and Company, engraving attributed to William Morse, 1915–1921. H. 28 cm, D. 11.5 cm (2011.4.149). Gift of Dorothy-Lee Jones.

Tyrian vase, blown. U.S., Corning, NY, Steuben Glass Works, about 1916. H. 12.8 cm, D. 9 cm (2011.4.83). Gift of Wende Wilson in memory of her parents, MacGregor and Eileen Wilson.

Modern

Les Hommes noirs (The dark men), cased, blown, *marqueterie*, engraved, acid-etched; applied handles. Emile Gallé (French, 1846–1904) and Victor Prouvé (French, 1858–1943), France, Nancy, Cristallerie d’Emile Gallé, 1900. H. 38.1 cm, D. 32.1 cm (2011.3.1). Purchased in part with funds from the Houghton Endowment Fund; James B. Flaws and Marcia D. Weber; Daniel Greenberg, Susan Steinhauser, and The Greenberg Foundation in honor of Natalie G. Heineman and Ben W. Heineman Sr.; James R. and Maisie Houghton; Ben W. Heineman Sr. Family; E. Marie McKee and Robert Cole Jr.; Elizabeth S. and Carl H. Pforzheimer III; and Wendell P. Weeks and Kim Frock Weeks.

Martins-pêcheurs sur fond de roseaux (Kingfishers on a background of reeds), cast (*cire perdue*). René Lalique (French, 1860–1945), France, Wingen-sur-Moder, R. Lalique et Cie, 1930. H. 26.3 cm, D. 32.1 cm

(2011.3.188). Gift of Stanford and Elaine Steppa, from a collection of about 400 objects by Lalique, made primarily between 1912 and 1936.

Toledo Bottle, blown #475 Johns Manville marbles. Harvey K. Littleton (American, b. 1922), U.S., Toledo, OH, The Toledo Museum of Art, 1962. H. 16.2 cm, D. 6.5 cm (2011.4.77). Gift of the Harvey K. Littleton Family.

Blood Sugar, blown glass and sheet glass, acid-etched, bonded. Tony Cragg (British, b. 1949), Germany, Wuppertal, 1992. Dimensions vary, about H. 90 cm, W. 210 cm (2011.3.115).

Host (Gold) and *Host (Iron)*, mold-blown, cut; cast brass, cast iron, wood. Jack Wax (American, b. 1954), U.S., Normal, IL; Penland, NC; and Lancaster, PA; 1997. Each (base): H. 3.2 cm, W. 122.2 cm (2011.4.78, .79). Gift of the artist.

Red Root and *Running Cold*, mold-blown, beads; steel, wire. Nancy Bowen (American, b. 1955), U.S., Stanwood, WA, and Brooklyn, NY, 1999. Taller: H. 195.6 cm, W. 83.8 cm (2011.4.189, .190). Anonymous gift.

Five Pods, glass, mosaic tiles, concrete, composite material, steel, rope. Ann Gardner (American, b. 1947), U.S., Seattle, WA, the 26th Rakow Commission, 2004. D. (max.) 198.1 cm (2011.4.70).

When Lightning Blooms (“Aesthetic Engineering” Series), blown; bronze, stainless steel. Ginny Ruffner (American, b. 1952), U.S., Seattle, WA, 2006. H. 106.7 cm, W. 96.5 cm (2011.4.71).

Lynx after a Sketchbook Page by Albrecht Dürer, cut colored glass, bonded; metal framework; framed digital inkjet print on paper. Marta Klonowska (Polish, b. 1964), Germany, Düsseldorf, and Poland, Warsaw, 2009. Lynx: H. 86 cm, W. 50 cm; print: H. 46.5 cm, W. 60 cm (2011.3.2). Gift of Mary Hale and M. Blair Corkran.

Fuji HG31119, fused and blown *murrine*. Lino Tagliapietra (Italian, b. 1934), U.S., Seattle, WA, 2011. H. 49.5 cm, D. 29.8 cm (2011.4.63). Purchased with funds from Richard and Judith Sphon and the F. M. Kirby Foundation.

Host (Gold) and Host (Iron), mold-blown, cut; cast brass, cast iron, wood. Jack Wax (American, b. 1954), U.S., Normal, IL; Penland, NC; and Lancaster, PA; 1997. Each (base): H. 3.2 cm, W. 122.2 cm (2011.4.78, .79). Gift of the artist.



Selected Additions to the Library Collection

Archive of Thomas Scharman Buechner (American, 1926–2010), founding director of The Corning Museum of Glass and a distinguished painter. Gift of the family of Thomas S. Buechner.

Collection of contemporary glass photography by George Erml (Czech, 1945–2008).

Jeffrey Rush Higgins Collection, materials relating to the work of the stained glass designer Frederick Wilson (1858–1932). Gift of Jeffrey Rush Higgins.

Archive of Reginald Kempton, who was affiliated with Southwark Glass Works and Nazeing Glass Works in England and, later, a private studio glassworks in New Zealand, 1924–1968. Gift of Garry Nash.

Archive of Josef and Clement F. J. Nitsche, including papers of “Nitsche & Son, Glass Engraving Establishment,” Corning, NY, early 20th century. Gift of Charles Nitsche.

Archive of Catherine Thuro (Canadian), including patents, original photographs, and research material relating to oil lamps.

Archive and library of Helene Weis (American, 1922–2007), including books on stained glass and research materials she collected. Gift of Henry and the late Helene Weis.

Antoine-Laurent Lavoisier (French, 1743–1794), *Elements of Chemistry*, Edinburgh: W. Creech, and London: G. G. and J. J. Robinsons, 1790. English translation of original French text of a key work in early modern chemistry.

Sixty-eight original watercolor designs for stained glass windows made by the Booth Art Glass Company, Buffalo, NY, about 1890–1910.

Five design drawings by René Lalique (French, 1860–1945) and four books about Lalique (two with inscriptions by him), about

Drawing by the stained glass designer Frederick Wilson (1858–1932) from the Jeffrey Rush Higgins Collection. Gift of Jeffrey Rush Higgins.

Original watercolor design for stained glass window made by the Booth Art Glass Company, Buffalo, NY, about 1890–1910.





Blueprint for gas lighting from "Système d'éclairage Mavrogordato" by François Eustache Mavrogordato (Greek, 1854-?), 1906-1910.

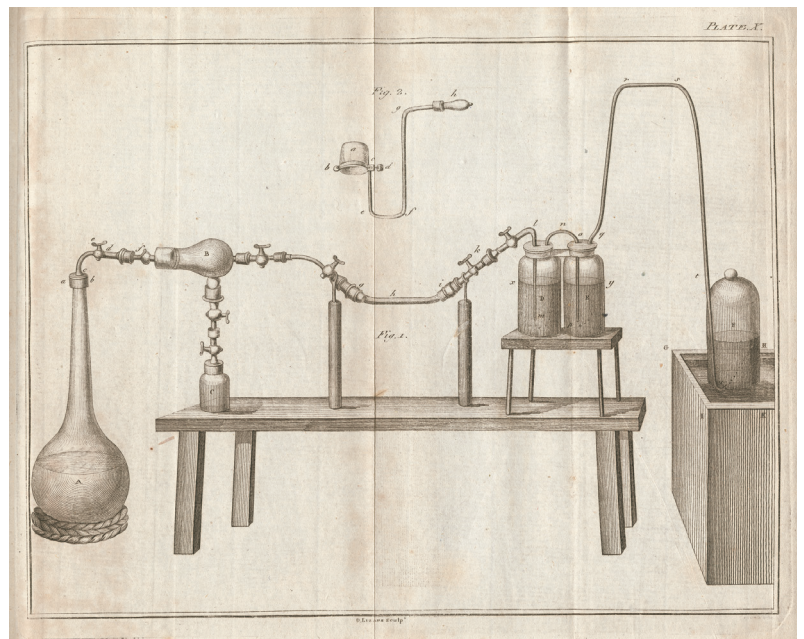
One of five design drawings by René Lalique (French, 1860-1945), about 1895-1905(?). Gift of Elaine and Stanford Steppa.

1895-1905?; Edmond Rostand, *Chantecler: Pièce en quatre actes, en vers*, Paris: Librairie Charpentier et Fasquelle, 1910 (with leather cover designed by Lalique, edition 918/1000). Gift of Elaine and Stanford Steppa.

François Eustache Mavrogordato (Greek, 1854-?), "Système d'éclairage Mavrogordato," 1906-1910. Blueprints for gas lighting.

Three daybooks of Harry E. Huffman (American, 1898-1967), recording designs and other data for 1930-1933, when he was employed as a moldmaker for Steuben Glass. Gift of Karlye Ann Gill Pillai.

Plate X from *Elements of Chemistry* by Antoine-Laurent Lavoisier (French, 1743-1794), 1790.



Exhibitions and Loans

Special Exhibition

Mt. Washington and Pairpoint: American Glass from the Gilded Age to the Roaring Twenties

Changing Exhibitions Gallery
May 19–December 31, 2011

Other Exhibitions

East Meets West: Cross-Cultural Influences in Glassmaking in the 18th and 19th Centuries

West Bridge
Through October 30, 2011

Mirror to Discovery: The 200-Inch Disk and the Hale Reflecting Telescope at Palomar

Rakow Research Library
Through October 30, 2011

Masters of Studio Glass: Toots Zynsky

Contemporary Glass Gallery Landing
April 2–December 4, 2011

Founders of American Studio Glass:

Dominick Labino
Rakow Research Library
November 17, 2011–January 6, 2013

The West Bridge exhibition “Founders of American Studio Glass” features works by Harvey K. Littleton.

Founders of American Studio Glass:

Harvey K. Littleton
West Bridge
November 17, 2011–January 6, 2013

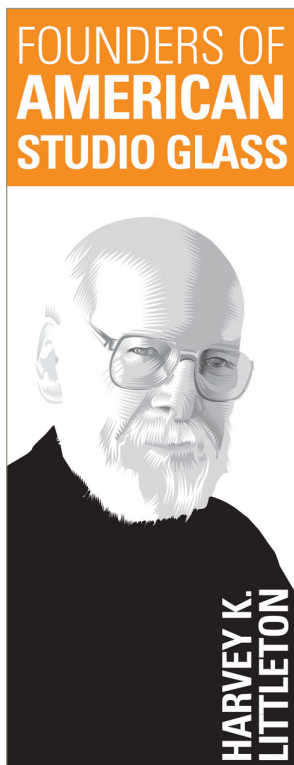
Glass on Loan

In 2011, the Museum had 66 objects on loan to seven exhibitions in the United States, Canada, and Asia. These loans are listed below in chronological order.

“Mythic Creatures: Dragons, Unicorns, and Mermaids” (traveling exhibition organized by the American Museum of Natural History), Ontario Science Center, Toronto, ON, Canada, through January 9, 2011; one object.

“Preston Singletary: Echoes, Fire and Shadows” (traveling exhibition organized by the Museum of Glass, Tacoma, WA), Heard Museum, Phoenix, AZ, through February 6, 2011; George Gustav Heye Center, National Museum of the American Indian, New York, NY, March 19–September 5, 2011; one object.

“Masters of Studio Glass: Richard Craig Meitner” (traveling exhibition organized by The Corning Museum of Glass), Museum of Glass, Tacoma, WA, through June 19, 2011; 34 objects.





The “Founders of American Studio Glass” exhibition in the Rakow Research Library presents documents from Dominick Labino’s extensive archive, which is held by the Library.

“Traveling the Silk Road: Ancient Pathway to the Modern World” (traveling exhibition organized by the American Museum of Natural History), National Museum of Natural Science, Taichung, Taiwan, June 11–September 11, 2011; six objects.

“The Yearning for Venetian Glass: Beauty That Traversed Oceans and Time,” Suntory Museum of Art, Tokyo, Japan, August 10–October 10, 2011; 17 objects.

“Wine and Spirit: Rituals, Remedies, and Revelry” (traveling exhibition organized by Mount Holyoke College Art Museum), Memorial Art Gallery, University of Rochester, Rochester, NY, September 2–December 12, 2011; four objects.

“Crafting Modernism: Mid-Century Art and Design,” Museum of Arts and Design, New York, NY, October 12, 2011–January 15, 2012; three objects.



Library Materials on Loan

Two original watercolor design drawings, one by Alice Carmen Gouvy and the other by Gouvy or Lillian A. Palmié, for Tiffany

Furnaces (Corona, New York, NY), lent to The Albuquerque Museum of Art and History, Albuquerque, NM, for the exhibition “A New Light on Tiffany: Clara Driscoll and the Tiffany Girls,” May 8–August 21, 2011.

Objects by Toots Zynsky are displayed as part of the Museum’s ongoing “Masters of Studio Glass” exhibition series.



Education and Public Programs

Special Event

Museum's 60th Birthday Celebration: free admission, extended hours (until 8 p.m.), and special activities; May 19

Adult Programs

Brilliant Weekend Affair (hosted by the Museum and presented by chapters of the American Cut Glass Association), April 9 and 10

Carder Steuben Club: The Glass of Frederick Carder (11th annual symposium, co-hosted by the Museum), September 15–17

Hot-Glass Programs

Demonstrations at the Museum and in Corning

Corning, NY, GlassFest (second annual), May 26–29

Flameworking, Glass Breaking, How'd They Do That?, Optical Fiber

The Late Show

You Design It; We Make It!

GlassLab

Vitra Design Museum, Weil am Rhein, Germany, June 13–19 (part of Art Basel);

designers: Beat Karrer, Active People [Rene Kueng and Alex Hochstrasser], Shin Azumi, Paul Cocksedge, Arik Levy, Stephen Burks, Sigga Heimis, James Irvine, Tomoko Azumi, Moritz Waldemeyer; makers: Eric Meek, David H. McNabb, Marc Barreda, Dan Mirer, Ian Schmidt)

Glass Design Workshops, Domaine de Boisbuchet, Lessac, France
Earth, Glass, and Fire, July 17–27 (makers: Lewis Olson, Fred Herbst)

Liquid Fusion, September 7–17 (design instructor: Paul Haigh; makers: Lewis Olson, Carl Siglin)

Korean Institute of Design, September 19–23 (instructors/makers: Eric Meek, Steve Gibbs, Lewis Olson, Michael Ruh, Jiyong Lee)

Hot Glass Show

Hot Glass Roadshow

Glass Art Society Conference, Washington State Convention Center, Seattle, WA, June 1–5 (makers: Jen Elek, Alex Stisser, Mark Zirpel, Nancy Callan, Guido Gerlitz, James Mongrain, KeKe Cribbs and Ross Richmond, Rodman Miller, and Joe Miller [Twisty Cup Competition])

Glass artists (clockwise) Marc Barreda, Ian Schmidt, and Dan Mirer work on a design by Tomoko Azumi during a GlassLab demonstration at Art Basel, Vitra Design Museum, Germany. Azumi experimented with the idea of blowing glass into cardboard tubes.

Scott Kardel, public affairs coordinator for the Palomar Observatory in California, discusses the 200-inch disk and the Hale Telescope during the "Meet the Astronomer" event.



Bergstrom-Mahler Museum, Neenah, WI,
October 6–9 (makers: George Kennard,
Carl Siglin, Helen Tegeler)

SOFA Chicago, Chicago, IL, November 4–6
(makers: Laura Donefer, Richard Jolley,
John Miller, Tim Shaw, Crystal Stubbs,
Ethan Stern, Dante Marioni, Preston Single-
tary, Mathieu Grodet, Simon Maberley, and
Rob Wynne)

Hot Glass at Sea

Presented live narrated demonstrations in hot-
glass studio on *Celebrity Eclipse*, *Celebrity*
Equinox, and *Celebrity Solstice*

“Meet the” Lectures

Susan Plum (artist), February 10

Scott Kardel (astronomer, Palomar Observa-
tory), March 24*

Dennis James (musician), June 23

Klaus Moje (artist), November 9*

Members’ Events

Opening and tours of “Mt. Washington and
Pairpoint,” May 19 and 21

Reception with Susan Plum (Meet the Artist),
February 10

Reception with Scott Kardel (Meet the Astron-
omer), March 24

Reception with Dennis James (Meet the Musi-
cian), June 23

Reception with Ann Gardner (Rakow Com-
mission), October 21

Reception with Klaus Moje (Meet the Artist),
November 9

Reception with Karol Wight (Meet the Execu-
tive Director), November 19*

Tour of “Founders of American Studio Glass:
Harvey K. Littleton,” November 19

Road Scholar (formerly Elderhostel) at The
Studio, March 14–17, May 2–5, October
23–28, and November 13–18

**Seminar on Glass (50th annual): “Art, Ele-
gance, and Ingenuity: Mt. Washington, Pair-
point, and Their Contemporaries,” October
20–22**

Lectures

October 20

“Imagination and Ingenuity in British Art
Glass, 1880–1920,” Charles Hajdamach

“International Ingenuity: Mt. Washington and
Pairpoint’s Contemporaries in Continental
Europe,” Florian Knothe



“The Mt. Washington and Pairpoint Glass
Companies, 1837–1957,” Jane Shadel
Spillman

“Mt. Washington Glass in Context: The Taste
for the Exotic in Late 19th-Century Deco-
rative Arts,” Alice Cooney Frelinghuysen

“Rakow Exhibition Lecture: A Glimpse behind
the Mirror” (200-inch disk), Aprille Nace

“Welcome and New Acquisitions Review,”
Karol Wight

*Artist Klaus Moje dis-
cusses his work during a
“Meet the Artist” event.*

*Tina Oldknow, curator
of modern glass, leads a
tour of “Founders of
American Studio Glass:
Harvey K. Littleton.”*

* Live streamed through the Museum’s Ustream channel.



Studio technician Quinn Doyle (left) and gallery educator Bonnie Wright (second from left) assist participants in the Junior Curators program as they install their exhibition.

October 21

- “Beyond the Glass: Mt. Washington and Pairpoint Archives in the Rakow Library,” Gail Bardhan
- “Beyond the Glass: The Rakow Library’s Glass Company Archives, Contemporaries of Mt. Washington and Pairpoint from the Late 19th and Early 20th Centuries,” Nivedita Chatterjee
- “Corning, the Crystal City, 1868–1915,” Jane Shadel Spillman
- “Glitter, Sparkle, Display, and Excess: Gilded Age Architecture and Design,” Richard Guy Wilson
- “Rakow Commission,” Ann Gardner
- “Smith Brothers Fine Decorated Glassware,” Kirk J. Nelson
- “Steuben Glass Works, Dorflinger Glass Works, and Pairpoint Manufacturing,” Tom Dimitroff

October 22

- “Early Mt. Washington Glass,” Jeffrey S. Evans
- “Focus on the Objects: Tips for Scholars, Collectors, and Connoisseurs,” panel discussion with Jeffrey S. Evans, Charles Hajdamach, Kirk J. Nelson, and Jane Shadel Spillman
- “An Investigation of Some Glass Decorating Techniques Used in Early 20th-Century American Factories,” William Gudenrath

Gallery Study Tours

- “Contemporary Glass Gallery,” Tina Oldknow

- “East Meets West,” Florian Knothe
- “Mt. Washington and Pairpoint,” Jane Shadel Spillman
- “Museum Favorites,” David Whitehouse
- “Roman Glass,” Karol Wight
- “Techniques of Glassmaking,” William Gudenrath

2300°

- “1951,” January 20
- “Sky’s the Limit,” February 17
- “Majority Rules,” March 17
- “GlassFest,” May 26
- “Honky Tonk Holiday,” November 17
- “Peace, Love, and 2300°,” December 15

Family Programs

Family Exploration Series

- “Families Explore: Space” (telescopes and constellations), January 16
- “Families Explore: Austria” (masterpieces of music and glass), February 20
- “Families Explore: Japan” (cherry blossoms, spring), March 20
- “Families Explore: Russia” (nested dolls and traditional dancing), April 17
- “Families Explore: Ancient Rome” (discovering pieces of the past), September 18
- “Families Explore: Science” (celebrating National Chemistry Week), October 16
- “Families Explore: America” (the Gilded Age to the Roaring Twenties), November 20

Family Night at the Museum, March 11 and September 23
 Fun with Glass
 Holiday Open House, December 3 and 4
 Make Your Own Glass

Children’s Programs

Glass Camp: Time Travelers (ages 9–11), July 11–15
 Little Gather (storytelling, ages 3–10)
 Glenn Colton: America the Beautiful Sing-Along, July 6
 Prismatic Magic: Laser Safari, July 13
 Cathy McGrath: Teakettle Music, July 20
 Mrs. McPuppet: Meet the Menagerie, July 27
 Madcap Puppets: Tales of Flight with the Brothers Wright, August 3
 Larry Moss: How to Catch a Mouse: Simple Machines at Work, August 10
 Doug Rougeaux: Bubblemania Pop Art, August 17
 Doc Possum: Songs to Make You Smile, August 24

Youth Programs

Beginning Glassblowing and Flameworking Workshop, August 8–12
 Explainers
 Fire Up Your Future, January 7 and August 12
 Junior Curators (included exhibitions “Dreaming with Open Eyes: Fantasy Meets Reality” at The Studio, through May 30, and “Collision! Nature Meets Industry,” June 10–December 31)

Scout Programs

All Scouts
 Fun with Glass
 Super Scout Saturday, November 5
 Boy Scouts
 Art
 Geology
 Science
 Girl Scouts
 Advanced Bead It!, March 26 and October 8
 Art
 Bead It!, March 26 and October 8
 Science

Tour Assistants

School Programs

Glass: It’s Art, History, Science, and More! (attended by 11,315 children)
 Immersion in Glass Studies
 Student Art Show (43rd annual), May 6–11

Teacher Programs

Evening for Educators, March 17 and November 17
 New York State Middle School Association, ninth annual Middle Level Institute (hosted by the Museum), June 27 and 28

Educational Tours

Adventures in Glass: Art, History, Science (all grades/interdisciplinary or subject-focused)
 Ancient Civilizations (middle school and up)
 Architecture (high school and college)
 Astronomy (middle school and up)
 Be a Designer (all grades)
 Chemistry (high school)
 Exploring Shapes and Colors (pre-kindergarten and kindergarten)
 Geology (Scouts, middle school and up)
 Glass and Our Community (third grade)
 Glass: It’s All Shapes and Sizes (first and second grades)
 Glass Matters! (fifth grade)

Girl Scouts use seed beads to create a piece of macramé jewelry during the “Bead It!” program.



International Baccalaureate Program: Chemistry and World History Interdisciplinary Study
 Introduction to the Rakow Library: Services and Collections (all grades/interdisciplinary or subject-focused)
 Meet the Museum (adult groups)
 Museum Careers (high school and college)
 Supply and Demand (middle school and up)
 Travel and Tourism (high school)
 Uses of Glass (elementary school)

Guided Tours and Gallery Activities

Activity Cards
 Garden Gallery Hunt (Glass Collection Galleries)
 Harvest Hunt (Glass Collection Galleries)
 Searching for Animals (Glass Collection Galleries)
 What Inspired Frederick Carder? (Carder Gallery)
 Who's Looking at You, Kids? (Glass Collection Galleries)
 Winter Wonders (Glass Collection Galleries)
 Audio and curatorial tours of "Mt. Washington and Pairpoint" exhibition
 "Design Your Own Lampshade" (interactive learning station in "Mt. Washington and Pairpoint" exhibition)
 "Director's Top 10" Rack Card (Museum Collection)
 Docent-led tours of highlights of "60 Favorites," May 27–October 30
 Family Hidden Treasures tours
 Gallery tours on Museum's Mobile App
 Hidden Treasures tours

Lucio Bubacco and Paul Stankard collaborate on a flameworked piece during the class "Fiori e angeli" (Flowers and angels) at The Studio.



Journey through Glass (summer youth tours)
 "Kids' Top 10" Rack Card (Museum Collection)
 Museum Explainers' Gallery Carts
 Ancient Glass
 Caneworking and *Murrine*
 Casting Techniques
 Glass Recipes and Cameo Glass
 Optics
 Pressed and Cut Glass
 Stained Glass
 "Scavenger Hunt" (activity sheet for "Mt. Washington and Pairpoint" exhibition)
 "Science Top 10" Rack Card (Museum Collection)
 Science tours
 "60 Favorites" (self-guided tour), April 2–December 31
 Tours of Rakow Research Library, including "Mirror to Discovery"

❖

The Studio

Intensive Courses

January 3–8
 "Enhance Your Glass" (kiln-worked glass and silver, bronze, and copper metal clay), Ed and Martha Biggar
 "Flameworking for Everybody," Emilio Santini
 "An In-Depth Introduction to Venetian Techniques" (glassblowing), William Gudenrath
 "Melting Pot" (glassblowing), John Miller

January 10–15
 "Clean Lines and Clean Forms in the Hot Shop" (glassblowing), Jordana Korsen
 "Cold Construction," Martin Rosol
 "Flameworking Using Ultimate Details," Loren Stump
 "Large-Scale Kiln Casting," Milon Townsend

January 17–22
 "Beginning Glassblowing," Bruce Ferguson
 "*Fiori e angeli*" (Flowers and angels; flameworking), Paul Stankard and Lucio Bubacco
 "Landscapes in Kiln-Formed Glass (Di Fiore's Technique)," Miriam Di Fiore

January 24–29
 "The Art of Kiln-Cast Jewelry," Jayne Persico
 "Color, Form, and Decorative Motifs in Borosilicate Glass" (flameworking), Suellen Fowler

“Designs, Forms, and Color” (glassblowing),
Jeremy Burdge and Dan Schreiber
“From the Kiln to the Hot Shop (and Back
Again),” Mark Ditzler and Harry Seaman

January 31–February 5

“The Amazing World of Borosilicate Color”
(flameworking), Nancy Tobey
“Color-Working Techniques” (glassblowing),
Alex Brand
“Frit by Design: Casting with Kiln-Formed
Murrine,” Anna Boothe
“Painting the Void: Sandblasting and Vitreous
Painting,” Denise Stillwaggon Leone

February 7–12

“Beginning Flameworking,” Jim Byrnes
“Glass Painting,” Cappy Thompson
“Graphic and Color Systems in Glass” (glass-
blowing), Mark Matthews
“An In-Depth Introduction to Venetian Tech-
niques” (glassblowing), William Gudenrath

May 30–June 4

“Cold Construction,” Martin Rosol
“Flameworking for Everybody: Bead Intensive,”
Heather Trimlett and Caitlin Hyde

June 6–17

“Blowing and Sculpting inside the Bubble,”
Martin Janecky*
“Glass Carving, Engraving, and Cold Con-
struction,” Jiří Harcuba and Martin Rosol
“Welcome to the Limitless World: Combina-
tion of Color and Pattern” (kiln forming),
Yoko Yagi

June 20–25

“Flameworking Using Ultimate Details,” Loren
Stump
“Technique and Vision in Kiln-Formed Glass:
A Mixed Marriage” (fusing), Martin Kremer
and Kari Minnick

June 27–July 2

“Color, Form, and Decorative Motifs in Boro-
silicate Glass” (flameworking), Suellen
Fowler
“An In-Depth Introduction to Venetian Tech-
niques” (glassblowing), William Gudenrath
“Tricks and Techniques” (glassblowing), David
McDermott

July 4–9

“The Art of Cameo Engraving,” Helen Millard

“Contemporary Techniques for Architectural
Glass” (kiln working and moldmaking),
Rene Culler and Philippa Beveridge
“A Foundation for the Future” (glassblowing),
Boyd Sugiki
“Micromosaics in Glass,” Cynthia Toops and
Daniel Adams

July 11–16

“Cold Working: Jewelry and Sculptural Forms,”
Don Friedlich
“Continue the Glassblowing Journey,” Nadine
Saylor
“Flower Marbles” (flameworking), John Kobuki
“Transforming Imaginations into Kiln-Formed
Glass,” Rudy Gritsch

July 18–29

“Glassmaking as a Language” (flameworking),
Gianni Toso*
“An In-Depth Introduction to Venetian Tech-
niques” (glassblowing), William Gudenrath
“Painting the Void: Sandblasting and Vitreous
Painting,” Denise Stillwaggon Leone
“Scandinavian Style” (glassblowing), Susanne
Jøker Johnsen

August 1–6

“Beginning Flameworking,” Jim Byrnes
“Fusing with Recycled Float Glass,” Nikki
O’Neill
“Multiple Gathers” (glassblowing), George
Kennard

August 15–26

“Flameworking for Everyone,” Emilio Santini
“Form & Techniques” (glassblowing), Kenny
Pieper
“Mosaic Glass,” Josh Simpson and Gabriele
Küstner

August 29–September 3

“Enhance Your Glass” (kiln-worked glass and
silver, bronze, and copper metal clay), Ed
and Martha Biggar
“Shaping Color: From Raw Materials to Fin-
ished Sculpture” (casting), Heike Brachlow
“Systems Made Transparent” (flameworking),
Christopher McElroy

September 5–10

“Beginning Glassblowing,” Amanda Gundy
“Introduction to Flameworking,” Tim Drier
“Next Steps in Glassblowing,” Harry Seaman
“Thicker Sculptural Fused Glass,” Mark Ditzler

* Demonstration during
class live streamed
through the Museum’s
Ustream channel.

Ten-Week Courses (one session each week)

Spring

- “Beginning Flameworking,” Jim Byrnes
- “Beginning Glassblowing,” Chrissy Lapham
- “Functional Fusing,” Janet Dalecki
- “Introduction to Caneworking,” Jeremy Unterman

Fall

- “Beadmaking & Jewelry Design,” Linda McCollumn
- “Beginning Flameworking,” Josh Powers
- “Beginning Glassblowing,” Allison Duncan
- “Continuing Glassblowing,” Lorin Silverman
- “Functional Fusing,” Janet Dalecki
- “Introduction to Caneworking,” Jeremy Unterman

Weekend Workshops

Spring

Glassblowing

- “Beginning Glassblowing,” Chrissy Lapham, Janet Dalecki, Aaron Jack, and Quinn Doyle
- “Introduction to Goblet Construction,” Jeremy Unterman
- “Next Steps in Glassblowing,” Rob Scavuzzo and Aaron Jack
- “Paperweights at the Furnace,” Lyman Babbitt

Flameworking

- “Bead Basics: Introduction to Flameworked Beads,” Caitlin Hyde and Jen Zitkov
- “Beginning Flameworking,” Jim Byrnes
- “Borosilicate Animal Figures,” Bob Carson
- “Flameworked Animal Beads,” Elijah Schwartz
- “Introduction to Flameworking: Beads and Marbles,” Josh Powers
- “Marble Making,” Quinn Doyle
- “More Than One Way to Make a Goblet,” Jim Byrnes

Kiln-Based Glass

- “Beginning Fusing,” Glady West
- “Beginning Stained Glass,” Tony Serviente
- “Fused Jewelry,” Gayla Lee
- “Photosandblasting Glass,” Denise Stillwaggon Leone
- “Precious Metal Clay and Glass,” Ed and Martha Biggar
- “Precious Metal Clay and Glass Using Copper and Bronze,” Ed and Martha Biggar

Fall

Glassblowing

- “Beginning Glassblowing,” Brenna Baker and Quinn Doyle
- “Introduction to Goblet Construction,” Jeremy Unterman
- “Vessels,” Lorin Silverman

Flameworking

- “Bead Basics: Introduction to Flameworked Beads,” Linda McCollumn
- “Beginning Flameworking,” Jim Byrnes
- “Fancy Icicles,” Caitlin Hyde
- “Flameworking Bottles and Goblets,” Lee Silveri
- “Introduction to Flameworking: Beads and Marbles,” Josh Powers
- “Ocean Life,” Elijah Schwartz
- “Seasonal Beads and Sculptures in Soft Glass,” Elijah Schwartz

Flat Glass

- “Fused Jewelry,” Gayla Lee
- “Introduction to Fusing,” Glady West
- “Mosaics,” Janet Dalecki
- “Next Steps in Fusing,” Glady West
- “Photosandblasting,” Denise Stillwaggon Leone
- “Precious Metal Clay and Glass Using Copper and Bronze,” Ed and Martha Biggar

One-Day Workshops

Spring

- “Beadmaking,” Allison Duncan
- “Beginning Glassblowing,” Aaron Jack
- “Marble Making,” Quinn Doyle
- “Paperweights at the Furnace,” Lyman Babbitt

Fall

- “Beadmaking,” Allison Duncan
- “Marble Making,” Quinn Doyle
- “Paperweights at the Furnace,” Eli Smith
- “Pumpkins and Gourds at the Furnace,” Janet Dalecki

GlassFest Workshops

- “Geometric Patterns in Fused Glass,” Gayla Lee, May 27 and 28
- “Release Your Inner Dragon: Stump the Instructor” (flameworking), Becky Congdon, May 27 and 28
- Special workshop with Davide Salvatore, May 23–28

From the Museum

Artists in Residence

Susan Liebold (Germany), March
Beth Lipman (U.S.), April
Adrienne Evans (U.S.), September
Dan Mirer (U.S.) and Nisha Bansil (U.S.),
September (Instructor Collaborative
Residency)

Amie Laird McNeel (U.S.), October
(Corning/Kohler Residency)

Min Jeong Song (South Korea), October
Veronika Beckh (Germany), November

Rakow Commission: Ann Gardner

Rakow Grant for Glass Research: Laure
Dussubieux, Diane C. Wright, Virginia C.
Young

Student Art Show scholarships: Molly
Sweeney (Corning–Painted Post East High
School), Haley Quinn (Corning–Painted
Post West High School)



Awards

*Artist in residence
Adrienne Evans pre-
pares to put glass into
a mold in the kiln.*

*The creative talents of
more than 2,000 local
students, ranging from
elementary grades to
high school, are show-
cased at the Museum's
annual Student Art
Show.*



Professional Activities

Publications

Brumagen, Regan. "The Artfulness of Utility," *The Flow*, Fall 2011, pp. 30–31+.

Bunkley, John K. "Robert Willson: Bringing Life to Solid Glass," *The Flow*, Summer 2011, p. 16+.

Dolbashian, Diane. Contributor to *The Corning Museum of Glass: Notable Acquisitions 2010*, Corning: the museum, 2011 (hereafter, *Notable Acquisitions 2010*).

Goldschmidt, Eric S. "Artist's Statement," *Glass Line*, v. 25, no. 3, October/November 2011, pp. 24–25.

—. "Living Out Your Fantasies," *The Flow*, Spring 2011, p. 8.

Knothe, Florian. Contributor to *Notable Acquisitions 2010*.

—. "Acquisition: The Corning Museum of Glass. Vases Made by Verreries et Cristalleries de Baccarat (France est. 1764), 1880s," *World of Antiques & Art*, issue 80, February–August 2011, pp. 32–33.

"Alhambra" vase, blown, mold-blown, cut, ground, drilled, gilded, assembled. Bohemia, Neuwelt, attributed to the Harrach glassworks, about 1862. H. 62 cm, D. 26.3 cm (2011.3.3).



—. "The Asian-Style Decoration of Val St. Lambert," *Journal of Glass Studies*, v. 53, Corning: The Corning Museum of Glass, 2011, pp. 259–261.

—. "Retour sur l'hôtel d'Aumont: La Décoration du cabinet de toilette en 1776," *Revue de l'Art*, no. 172, 2011/2012, pp. 39–47.

—. "Venetian Glass and Its Influence in Europe during the Renaissance and Baroque Periods," in *The Yearning for Venetian Glass: Beauty That Traversed Oceans and Time*, ed. Ruriko Tsuchida, Yukie Yasukouchi, and Yasuyuki Sasaki, Tokyo: Suntory Museum of Art, 2011 (hereafter, *The Yearning for Venetian Glass*), pp. 9–15 (in Japanese, with English translation on pp. 178–180).

—. Review of Jørgen Hein, *The Treasury Collection at Rosenborg Castle: The Inventories of 1696 and 1718: Royal Heritage and Collecting in Denmark–Norway, 1500–1900*, in *The Burlington Magazine*, v. 153, no. 1300, July 2011, pp. 484–485.

Koob, Stephen P. "An Old Material, a New Technique: Casting Paraloid B-72 for Filling Losses in Glass" (with N. Astrid R. van Giffen and others), in *Adhesives and Consolidants for Conservation: Research and Applications Symposium 2011*, Ottawa, ON: Canadian Conservation Institute (DVD).

Mills, Mary Cheek. "NAGC Inaugurates Distinguished Member Recognition Lectures and Scholarships," *The Glass Club Bulletin*, National American Glass Club (hereafter, *GCB*), no. 220, Autumn/Winter 2011, pp. 21–22.

Oldknow, Tina. Contributor to *Notable Acquisitions 2010*.

—. "Barry Friedman: L'Eclectisme visionnaire = Barry Friedman: Prescient Eclecticism," in *Collection Barry Friedman* (sales catalog), Paris: Camard et Associés, Maison de Ventes aux Enchères, in collaboration with Clara Scremini, October 3, 2011, pp. 6–7.

—. "In Perspective: Curator's Eye," *Modern*, Fall 2011, p. 98.

—. "Jury Statement" and "Note: The Rakow Commission," *New Glass Review* 32, Corning: The Corning Museum of Glass, 2011, pp. 69–72 and 95–97.

- . “Maestro Lino,” in *Lino Tagliapietra: Da Murano allo studio glass, opere 1954–2010*, ed. Rosa Barovier Mentasti, Venice: Marsilio Editori, 2011, pp. 26–35.
- . “Michael Glancy: Molecular Aesthetics,” in *Michael Glancy: Infinite Obsessions, 1996–2011*, New York: Barry Friedman Ltd., and Stuttgart, Germany: Arnoldsche Art Publishers, 2011, pp. 97–113.
- . “New Acquisitions from The Corning Museum of Glass, Corning, New York,” *American Society of Jewelry Historians Newsletter*, Summer 2011, pp. 10–11.
- . “Palimpsestes: Philip Baldwin et Monica Guggisberg = Palimpsests: Philip Baldwin and Monica Guggisberg,” in Isabelle Naef Galuba and others, *Baldwin/Guggisberg: Au-delà du verre = Beyond Glass*, Geneva, Switzerland: Musée Ariana, and Milan, Italy: 5 Continents Editions, 2011, pp. 87–136.
- . “Richard Jolley: Flights of Fancy,” in *Richard Jolley: Venice Continuum*, ed. Adriano Berengo, Venice: Berengo Studio, 2011, pp. 12–15.
- Spillman, Jane Shadel. Editor, *GCB*, nos. 219 and 220, 2011.
- . *Mt. Washington and Pairpoint Glass, Volume 2* (with Kenneth M. Wilson), Corning: The Corning Museum of Glass, 2011.
- . Contributor to *Notable Acquisitions 2010*.
- . “Corning’s Ribbon Machine,” *All About Glass*, v. 8, no. 4, January 2011, p. 24.
- . “New Marks on Old Glass,” *GCB*, no. 220, Autumn/Winter 2011, pp. 5–14.
- . “On View at The Corning Museum of Glass, May 19–December 31: Mt. Washington and Pairpoint Glass: From the Gilded Age to the Roaring Twenties,” *The Journal of Antiques and Collectibles*, v. 12, no. 2, April 2011, pp. 54–55.
- . “What Is This? (Part II),” *GCB*, no. 220, Autumn/Winter 2011, p. 22.
- . Review of Ardis M. Slater, *Bellflower Pressed Glass: America’s First Complete Tableware*, in *The NewsJournal* (Early American Pattern Glass Society), v. 18, no. 1, Spring 2011, p. 19.
- Van Giffen, N. Astrid R. “AHG Grant Report: Study on Blaschka Glass,” *Glass News*, no. 29, January 2011, p. 10.
See also Koob, Stephen P.
- Whitehouse, David B. Contributor to *Notable Acquisitions 2010*.
- . “Nineteenth-Century Imitations of Glass Made in Ancient Rome,” in *The Yearning for Venetian Glass*, pp. 16–22 (in Japanese, with English translation on pp. 181–183).
- . Review of Søren Fredslund Andersen, *The Tylos Period Burials in Bahrain*, v. 1, *The Glass and Pottery Vessels*, in *Journal of Roman Archaeology*, v. 24, pt. 2, 2011, pp. 808–810.
- . Review of E. B. Curtis, *Glass Exchange between Europe and China, 1550–1800*, in *Technology and Culture*, v. 52, April 2011, pp. 393–394.
- Wight, Karol B. *Molten Color: Glassmaking in Antiquity*, Los Angeles: The J. Paul Getty Museum, 2011.

Lectures

Bardhan, Gail P.* “Carder on Display,” Carder Steuben Club symposium, Corning, NY.

Brumagen, Regan. “The Huffman Day Books,” Carder Steuben Club symposium, Corning, NY.

—. “Stories from Our Past: Oral History Projects,” New York Library Association, annual conference, Saratoga Springs, NY.

Cassetti, Robert K. “Hot Glass Outreach Programs,” MUSCON Conference, The Wolfsonian-FIU Museum, Miami Beach, FL.

—. “Leading the Way through Change,” Great Camp Sagamore, Raquette Lake, NY.

Chatterjee, Nivedita.*

Gudenrath, William.* “Making the Begram Fish: An Ancient Glassworking Process Investigated,” Afghanistan: Crossroads of the Ancient World conference, The British Museum, London, U.K. (hereafter, Afghanistan: Crossroads conference).

—. “A Survey of Unusual Goblet-Making Techniques of the Medieval and Renaissance Periods,” New York Metropolitan Glass Club, New York, NY.

—. “The Venetian Influence in 16th-Century Catalan Luxury Glass,” for group from the Museo de Arte en Vidrio de Alcorcón, Corning, NY (included demonstration).

- Knothe, Florian.* “Art and Technology Transfer: European Glassmaking in Eighteenth-Century China,” World History Association conference, Beijing, China.
- . “Beyond the Old Silk Road: International Influences in Glassmaking in the 18th and 19th Centuries,” Hollister Lecture, Bard Graduate Center, New York, NY.
- . “Celebrating France Inside and Out: The Enduring Importance of Diplomatic Gifts under Louis XIV,” Society for the Study of French History, 25th annual conference, Fitzwilliam College, Cambridge, U.K.
- . “Diplomatic Gifts under Louis XIV and Their Significance in Fabricating an Idea of France,” The Idea of France/L’Idée de la France conference, University of Pittsburgh, Pittsburgh, PA.
- . “Glassmaking in Western Europe and East Asia,” meeting of the International Council of Museums (hereafter, ICOM), Glass Committee, Barcelona, Spain.
- . “Spanisches Glas: Spiegel kultureller Einflüsse während der Renaissance und des Barock,” Kunst auf der Iberischen Halbinsel forum, 31. Deutscher Kunsthistorikertag, Würzburg, Germany.
- Koob, Stephen P. “Conservation and Restoration of Glass at Samothrace,” Exploring the Interface between Field Archaeology and Conservation workshop, New York University Abu Dhabi Institute, Abu Dhabi, United Arab Emirates.
- . “Crizzling Glasses: Problems and Solutions,” Workshop on Durability and Conservation I, International Conference on the Chemistry of Glasses and Glass-Forming Melts, Society of Glass Technology, Oxford, U.K.
- . “An Old Material, a New Technique: Casting Paraloid B-72 for Filling Losses in Glass” (with N. Astrid R. van Giffen and others), Adhesives and Consolidants for Conservation: Research and Applications symposium, Canadian Conservation Institute, Ottawa, ON, Canada.
- McGovern, Megan H. “More Fragile than Glass: Preserving Digital Materials,” Carder Steuben Club symposium, Corning, NY.
- Mills, Mary Cheek. “Glass in Early America,” Winterthur Institute, Winterthur Museum, Garden, & Library, Winterthur, DE.
- . “History and Technology of American Glass,” Sotheby’s Institute of Art, New York, NY.
- . “Reflections of Refinement: Glass in Early American Homes,” Stenton (historic house), Philadelphia, PA.
- Nace, Aprille C.*
- Oldknow, Tina. “Imagining the Past and Inventing the Present: The Uses of History in 19th-, 20th-, and 21st-Century Glass,” New York Metropolitan Glass Club, New York, NY.
- . “Sources of Inspiration: The Heineman Collection,” Metropolitan Contemporary Glass Group, New York, NY.
- . “The Wizard of Nancy and His Successors: Glass, Contemporary Art, and Alchemy,” Rhode Island School of Design, Providence, RI.
- Spillman, Jane Shadel.* “The Connections between the Glassmakers of Corning and White Mills,” Dorflinger Symposium, Dorflinger Glass Museum, White Mills, PA.
- . “The Gilded Age to the Roaring Twenties: Mt. Washington and Pairpoint Cut Glass,” American Cut Glass Association, annual meeting, Orlando, FL.
- . “Lighting at The Corning Museum of Glass,” joint meeting of the Rushlight Club, Historical Lighting Society of Canada, and Miniature Lamp Collectors Club, Corning, NY.
- . “Mt. Washington and Pairpoint: From the Gilded Age to the Roaring Twenties,” meeting of ICOM, Glass Committee, Barcelona, Spain.
- . “Mt. Washington and Pairpoint Glass,” Mega-Glass Convention, Kansas City, KS; New York Metropolitan Glass Club, New York, NY; and Evening for Educators, The Corning Museum of Glass.
- . “Museum Careers,” Cooperstown Graduate Program, Cooperstown, NY.
- Tshudy, Sheila A. “Adapting to Change: A Library Assistant’s View,” New York State Library Assistants’ Association, annual conference, Geneseo, NY.
- Van Giffen, N. Astrid R. *See* Koob, Stephen P.

Whitehouse, David B. “La datazione della vetreria dell’Agorà Centro-meridionale (‘Agora South-Centre Glass Factory’) a Corinto,” University of Calabria, Cosenza, Italy.

———. “The Glass from Begram,” Afghanistan: Crossroads conference.

———. “Glassmaking at Tyre, 950–1300 C.E.,” Séminaire International sur l’Histoire de Tyr au Témoignage de l’Archéologie, Tyre, Lebanon.

Wight, Karol B. * “Molten Color: Glassmaking in Antiquity,” Members’ event, The Corning Museum of Glass.

* For lecture at Seminar on Glass, see pages 15–16.

Other Activities

Brumagen, Regan. Past-president, Academic and Special Libraries Section, New York Library Association; member, membership promotion committee and instruction section teaching methods committee, Association of College & Research Libraries.

Cassetti, Robert K. Vice chairman, Museumwise, Oneonta, NY; member, Museum Association of New York/Museumwise consolidation committee.

Congdon, Rebecca A. Presented flameworking demonstration for beginning and advanced jewelry classes, Mansfield University, Mansfield, PA.

Corradini, Ellen D. Secretary, Museum Management Committee, American Association of Museums.

Duane, Elizabeth M. Board member, Gaffer District and Finger Lakes Wine Country, Corning, NY; member, marketing committee, Finger Lakes Tourism Alliance, Penn Yan, NY.

Gudenrath, William. President, The Fellows of The Corning Museum of Glass; member, International Advisory Committee, Urban-Glass, Brooklyn, NY. Worked as a specialist consultant with curator/author Suzanne Higgott on *The Wallace Collection: Catalogue of Glass and Limoges Painted Enamels* in London, U.K., and Corning, NY. Co-led tour of Venice, Murano, and the

Veneto region of northern Italy for the Ennion Society of The Corning Museum of Glass. Created a dragon-stem goblet that was acquired by the Museo Internazionale del Vetro d’Arte e delle Terme, Montegrotto Terme, Italy. Presented a lecture, demonstration, and master class in Venetian-style glassblowing techniques for the Materials Science Department, Pennsylvania State University, State College, PA; presented demonstration of Roman glassworking techniques at wood-fired glassworking furnace at the Provinciaal Archeologisch Museum, Velzeke, Belgium.

Hylan, Beth J. Past-president, Art Libraries Society of Western New York; member, History Advisory Committee, Glass Art Society; member, Safety Advisory Committee, International Society of Glass Beadmakers. Completed New York Foundation for the Arts MARK program, focusing on professional and business skills for artists.

Karden, Kala G. Certified as volunteer administrator by the Council for Certification in Volunteer Administration.

Knothe, Florian. Participant in 33rd German-American Young Leaders Conference, Jackson Hole, WY.

Koob, Stephen P. Chairman, Technical Committee 17, International Commission on Glass; chairman, Conservation and Heritage Management Committee, Archaeological Institute of America; national peer, General Services Administration for the Design and Construction Excellence Programs and Art in Architecture Program. Elected as Fellow, The Corning Museum of Glass. Taught “Conservation of Glass,” a one-week course co-sponsored by the Museum and International Academic Projects, at the Museum of Natural History, London, U.K.; taught and supervised two student conservators from the New York University Conservation Program for two weeks at the Samothrace Museum, Samothrace, Greece.

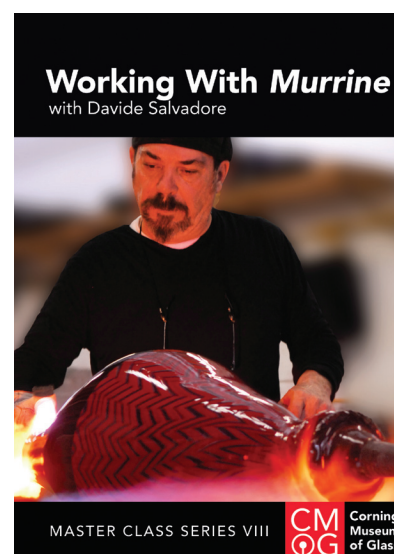
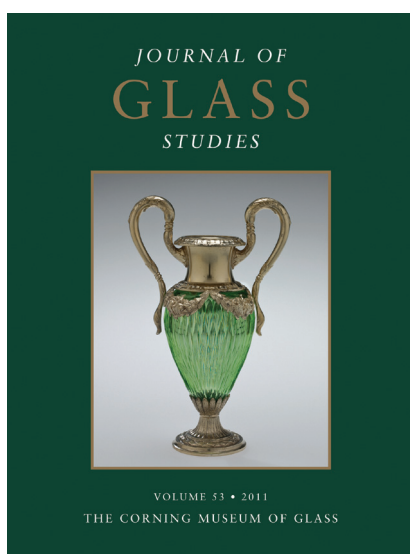
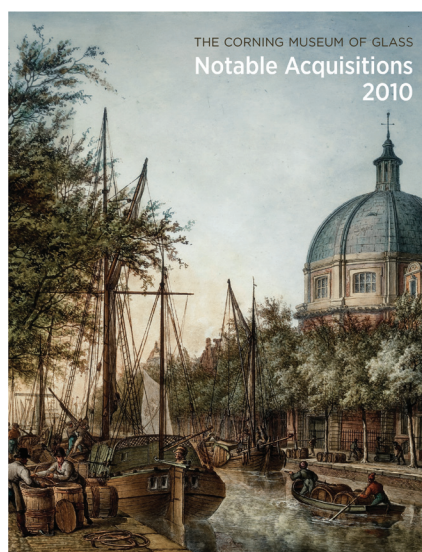
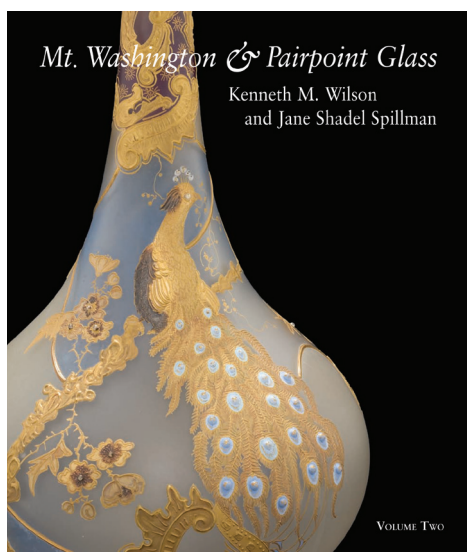
McGovern, Megan H. Member of panel sessions “DAM(S) the Torpedoes, Full Speed Ahead: Digital Asset Management Systems and the Museums of Tomorrow,” American Association of Museums, annual conference,



Kobl tube, applied, marvered. Islamic, Egypt or the Levant, seventh or eighth century. H. 10.4 cm, D. (max.) 1.7 cm (2011.1.3).

- Houston, TX, and “Reinforcing the DAMS for the Future: Common Issues and Challenges,” Museum Computer Network, annual conference, Atlanta, GA.
- Mills, Mary Cheek. Trustee, Neustadt Collection of Tiffany Glass, New York, NY. Chairman, nominating committee, National American Glass Club. Directed hands-on workshops “‘Reflections of Refinement’: A Hands-On Workshop Exploring Glass in Early American Homes,” Stenton (historic house), Philadelphia, PA; “Techniques of Glassworking,” Sotheby’s Institute of Art, New York, NY; and “Understanding Glass Technology,” Winterthur Institute, Winterthur Museum, Garden, & Library, Winterthur, DE. Taught “Introduction to Glass Materials and Techniques” and “American Glass” for Winterthur Program in American Material Culture, Winterthur Museum, Garden, & Library, Winterthur, DE. Vetted Winter Antiques Show, New York, NY.
- Nace, Aprille C. Elected to board of trustees, South Central Regional Library Council, Ithaca, NY.
- Oldknow, Tina. Received award, for service to the field of contemporary glass, from UrbanGlass, Brooklyn, NY. Juror, Ranamok Glass Prize, Sydney, Australia; “Benchmarking: Contemporary Irish Studio Glass,” Navan, County Meath, Ireland; Emerging Artist-in-Residence Program, Pilchuck Glass School, Stanwood, WA; and “Convergence III: Inspirations and Interpretations,” International Society of Glass Beadmakers, Louisville, KY. Chairman, advisory council, North Lands Creative Glass, Caithness, Scotland, U.K. Member, editorial advisory committee, *GLASS: The UrbanGlass Art Quarterly* magazine, Brooklyn, NY; advisory committee, Glass Art Society; advisory board, Glass Art Association of Canada; and International Council, Pilchuck Glass School, Stanwood, WA.
- Public Services Team, Rakow Research Library. Collected oral histories from the Corning community at Corning, NY, GlassFest.
- Schwartz, Amy J. Board member and member of governance committee, Museum Association of New York. Member, international advisory committee for International Craft Biennale, Cheongju, South Korea; lecturer at Craft Summit 2011, The National Museum of Korea, Seoul, South Korea (part of Biennale). Made presentations about The Studio at Bezelel Academy of Arts and Design, Jerusalem; Shenkar College of Engineering and Design, Tel Aviv; and Tel-hai Arts Institute during visit to Israel sponsored by the Association for Israeli Decorative Arts. Panelist, Decentralization Regrant Program, The ARTS Council of the Southern Finger Lakes, New York State Council on the Arts.
- Spillman, Jane Shadel. General secretary, Association Internationale pour l’Histoire du Verre (hereafter, AIHV); secretary, ICOM, Glass Committee; first vice president, National American Glass Club; trustee, Corning–Painted Post Historical Society; vetted Winter Antiques Show, New York, NY.
- Tshudy, Sheila A. Member, review board for the Certificate of Achievement Program of the New York State Library Assistants’ Association.
- Van Giffen, N. Astrid R. Assistant coordinator in charge of glass deterioration, ICOM, Committee for Conservation, Glass and Ceramics Working Group.
- Whitehouse, David B. Board member, AIHV and American Friends of Chartres Cathedral. Trustee, The Corning Museum of Glass (until October 19) and Rockwell Museum of Western Art, Corning, NY. Elected as Fellow, The Corning Museum of Glass. Fellow, Royal Geographical Society and Society of Antiquaries of London, U.K. Member, Accademia Fiorentina delle Arti del Disegno, Florence, Italy; Pontificia Accademia Romana di Archeologia, Rome, Italy; Accademia di Archeologia, Lettere e Belle Arti, Naples, Italy; and Deutsches Archäologisches Institut, Berlin, Germany.
- Wight, Karol B. Trustee and Fellow, The Corning Museum of Glass; adjunct professor of art history, University of Southern California, Los Angeles, CA; member, Advisory Committee, Intercollegiate Center for Classical Studies, Rome, Italy.

Publications



Mt. Washington and Pairpoint Glass, Volume 2
Kenneth M. Wilson and Jane Shadel Spillman, assisted by Mary B. Chervenak, with a contribution by Kirk J. Nelson
379 pp., 726 illustrations

The Corning Museum of Glass: Notable Acquisitions 2010
82 pp., 63 color illustrations

Journal of Glass Studies
Volume 53
291 pp., illustrations

New Glass Review 32
128 pp., 228 color illustrations

Master Class Series, Volume 8: *Working with Murrine with Davide Salvadore*
30-minute color video (DVD)

Museum Staff

Staff as of
December 31, 2011

Leadership Team

Robert K. Cassetti
*Senior Director, Creative Services
and Marketing*

Ellen D. Corradini
Director of Human Resources

Elizabeth M. Duane
*Director, Marketing
and Community Relations*

Nancy J. Earley
*Senior Director, Administration
and Finance*

E. Marie McKee
President

Amy J. Schwartz
*Director, Development, Education,
and The Studio*

David R. Togni Jr.
Director of Finance

Karol B. Wight
*Executive Director and Curator
of Ancient and Islamic Glass*

❖ ❖ ❖

Peter Bambo-Kocze
Bibliographer

Gail P. Bardhan
Reference and Research Librarian

Jeannine M. Bates
GlassMarket Area Coordinator

Sally K. Berry
*Group Sales and Loyalty
Marketing Manager*

Kelly L. Bliss
Cataloguer

Jacqueline M. Brandow
*Make Your Own Glass Workshop
Assistant, The Studio*

Nancy R. Brennan
Buyer

Regan Brumagen
*Reference and Emerging Technology
Services Librarian*

Ann M. Bullock
*Human Resource/Constituent
Management Specialist*

Warren M. Bunn II
Collections and Exhibitions Manager

Kenneth L. Burns
Public Services Assistant

Kimberly A. Carlisle
Executive Assistant

Kurt B. Carlson
Workshop Team Leader, The Studio

Nivedita Chatterjee
Processing Archivist

Rebecca A. Congdon
*Development and Special
Projects Coordinator*

Christy L. Cook
Assistant Registrar

Julia A. Corrice
Serials Assistant

Lynn M. Creeley
Retail Operations/Inventory Associate

Laurie J. Derr
Collections Management Assistant

Daniel G. DeRusha
Hot Glass Outreach Logistics Planner

Diane Dolbashian
Librarian

Quinn H. Doyle
Facility Coordinator, The Studio

Allison M. Duncan
*Fun with Glass Team Leader,
The Studio*

Matthew K. Eaker
Maintenance Coordinator

Peggy J. Ellis
Guest Services Coordinator

Shirley K. Faucett
GlassMarket Area Coordinator

Mieke L. Fay
Youth and Family Programs Educator

Kathleen D. Force
Storage Facility Coordinator

A. John Ford
Narrator/Interpreter

Andrew M. Fortune
*Photographer/Digital Imaging
Team Leader*

Lori A. Fuller
*Associate Librarian, Collections
Management*

Adrienne V. Gennett
Curatorial Assistant

Steven T. Gibbs
Hot Glass Programs Manager

William J. Gilbert
Safety Manager

Eric S. Goldschmidt
*Innovation Center Programs
Supervisor*

William Gudenrath
Resident Adviser, The Studio

Bonnie L. Hackett
Customer Service Specialist

Brandy L. Harold
Registrar

Myrna L. Hawbaker <i>Volunteer Program Coordinator/ Telephone Administrator</i>	Suzette L. Lutchter <i>GlassMarket Purchasing and Sales Associate</i>	Aprille C. Nace <i>Associate Librarian, Public Services</i>
Stephen Hazlett <i>Preparator, Mount Maker</i>	Louise M. Maio <i>Public Programs Planner</i>	Victor A. Nemard Jr. <i>GlassMarket Merchandise Manager</i>
Beverly J. Hough <i>GlassMarket Area Coordinator</i>	Miriam Martinez <i>Member Services Specialist</i>	Francis R. Ochab <i>Preparator</i>
Caitlin B. Hyde <i>Technical Interpreter/Glass Demonstrator</i>	James I. Matteson <i>Maintenance Supervisor</i>	Tina Oldknow <i>Curator, Modern Glass</i>
Beth J. Hysten <i>Reference and Outreach Librarian</i>	Linda R. McCollumn <i>Make Your Own Glass Workshop Assistant, The Studio</i>	Lewis R. Olson <i>Hot Glass Technical Team Leader</i>
Scott R. Ignaszewski <i>Audiovisual and Events Supervisor</i>	Michael A. McCullough <i>Assistant Controller</i>	Nancy J. Perkins <i>Events Coordinator</i>
Nedra J. Jumper <i>Administrative Project Planner</i>	Megan H. McGovern <i>Digital Asset Specialist</i>	El L. Peterson <i>Maintenance Technician</i>
Kathleen A. Kapral <i>Acquisitions Assistant</i>	Linda K. McNerny <i>GlassMarket Area Coordinator</i>	Shelley M. Peterson <i>Retail Buying/Sales and Operations Supervisor</i>
Kala G. Karden <i>Volunteer Program Supervisor</i>	Eric T. Meek <i>Hot Glass Show Supervisor</i>	Donald G. Pierce <i>Hot Glass Team Leader/Gaffer</i>
George M. Kennard <i>Hot Glass Team Leader/Gaffer</i>	Deborah G. Mekos <i>Senior Graphic Designer</i>	Martin J. Pierce <i>Digital Photography Technician</i>
Florian Knothe <i>Curator, European Glass</i>	Karen A. Metarko <i>Financial Analyst</i>	Richard W. Price <i>Head, Publications Department</i>
Thomas M. Knotts <i>Executive Secretary</i>	L. Kerry Miller <i>Tourism Sales Specialist</i>	Christopher A. Rochelle <i>Hot Glass Cruise Ship Demonstrator/Narrator</i>
Stephen P. Koob <i>Chief Conservator</i>	Maureen L. Miller <i>Guest Services Supervisor</i>	Jacolyn S. Saunders <i>Publications Specialist</i>
Valerie M. Kretschmann <i>Accounting Associate</i>	Stephanie A. Miller <i>Digital Communications Supervisor</i>	Tracy L. Savard <i>Cataloguing Specialist, Artwork and Books</i>
Amanda S. Kritzeck <i>Content and Media Specialist</i>	Mary Cheek Mills <i>Education Programs Manager</i>	Harry E. Seaman <i>Facility Manager, The Studio</i>
David A. Kuentz <i>Innovation Center Technician/ Demonstrator</i>	Timothy L. Morgan <i>Maintenance Technician</i>	Debra C. Sharretts <i>Human Resource Coordinator</i>
Allison S. Lavine <i>Digital Photography Assistant</i>	Timothy M. Morgan <i>Inventory Control Specialist</i>	Aaron P. Sheeley <i>Desktop Coordinator</i>
	David R. Murray <i>Operations Manager</i>	

Drinking goblet and bell (so-called Duk d'Alf Bell, named after the duke of Alva), blown, mold-blown, tooled, applied, gilded. Low Countries, Antwerp, 1575–1600. H. 19.4 cm, D. 13.7 cm (2011.3.116).



Karen L. Vaughn
*Student and Instructor Services
Coordinator, The Studio*

Regina L. Wagner
Guest Services Manager

Ling Wang
Database Administrator

Diane E. Webster
Guest Services Lead Studio Associate

Gladys M. West
*Make Your Own Glass Workshop
Manager, The Studio*

Melissa J. White
Collections Database Specialist

David B. Whitehouse
Senior Scholar

Tina M. Wilcox
Accounting Associate

Nicholas L. Williams
Photographic Department Manager

Nicholas C. Wilson
*GlassMarket and Guest Services
Technical Coordinator*

Shana L. Wilson
Conservation and Research Assistant

Violet J. Wilson
*Administrative Assistant, Curatorial
Department*

Erin A. Wing
Special Projects Manager, The Studio

Bonnie L. Wright
Gallery Educator

Justin F. Yen
Guest Services Associate

Stefan M. Zoller
Preparator

Annette R. Sheppard
Hot Glass Cruise Ship Team Leader

Carl A. Siglin
Hot Glass Cruise Ship Team Leader

Damon V. Smith
Network Analyst

Megan E. Smith-Heafy
Digital Designer/Developer

Tina S. Snow
*Marketing and Communications
Coordinator*

Jane Shadel Spillman
Curator, American Glass

Sara L. Squires
Accounting Associate

June E. Stanton
*GlassMarket Store and Customer
Service Supervisor*

Yvette M. Sterbenk
Senior Manager, Communications

Jason M. Thayer
Audio Technician

Jill Thomas-Clark
Rights and Reproductions Manager

Timothy C. Thompson
Server Administrator

Sheila A. Tshudy
*Cataloguing Specialist, Trade
Catalogs and Audiovisual Materials*

Jeremy I. Unterman
Facility Coordinator, The Studio

N. Astrid R. van Giffen
Assistant Conservator

Randy T. Vargason
Information Technology Manager

The Museum's 80 docents led 1,810 tours in 2011 (a total of 2,986 hours).

Our docents, and their years of service to the Museum, are:

- | | | |
|-----------------------|----------------------|-------------------------|
| Anita Adelsberg, 3 | Michael Geiger, 4 | William Mecum, 4 |
| Jerry Altilio, 6 | Nathalie Gollier, 6 | Daniel Minster, 7 |
| Malinda Applebaum, 5 | Gretchen Halpert, 3 | Francine Murray, 4 |
| Roger Bartholomew, 1 | Thomas Hart, 10 | Martha Olmstead, 11 |
| Cheryl Barton, 1 | Virginia Hauff, 11 | William Plummer, 9 |
| Melissa Bauco, 6 | Bianca Heldt, 1 | William Powell, 7 |
| Bonnie Belcher, 11 | Roberta Hirliman, 6 | Judith Prentice, 5 |
| Susan Berry, 5 | Janis Hobbs-White, 5 | Cindy Price, 3 |
| Karen Biesanz, 7 | William Horsfall, 9 | Sandrine Remy, 3 |
| Judy Bliss, 5 | Christine Hoyler, 1 | Thomas Reynolds, 3 |
| Martina Boger, 1 | Carla Dyer Jaeger, 8 | Anna Rice, 13 |
| Barbara Burdick, 10 | Albert Johnson, 10 | Karen Rowe, 7 |
| Louise Bush, 3 | Margaret Kish, 4 | Marian Rutty, 5 |
| Richard Castor, 11 | John Kohut, 7 | Betty Santandrea, 4 |
| Zung Sing Chang, 9 | Jean Krebs, 9 | Loris Sawchuk, 31 |
| Sharon Colacino, 6 | Eileen Kremer, 5 | Gisela Smith, 8 |
| Joseph Coletta, 1 | Barbara Kurcoba, 1 | David Stafford, 1 |
| Ann Congdon, 2 | Yun Kyung Lee, 1 | Shao-Fung Sun, 6 |
| Barbara Cooper, 6 | Steven Levine, 6 | Patricia Thiel, 19 |
| Barbara Cunningham, 1 | Lenore Lewis, 13 | Steve Tong, 8 |
| Martha Custer, 1 | Elizabeth Lisk, 1 | Edward Trexler, 9 |
| Kimberly Cutler, 3 | Dennis Lockard, 6 | Florence Villa, 8 |
| Anne Darling, 7 | Tricia Louiz, 4 | Donald Walker, 11 |
| Shirley Edsall, 11 | Doris Lundy, 20 | Betsy Whedon, 5 |
| Charles Ellis, 10 | Mary Margeson, 7 | Elizabeth Whitehouse, 1 |
| Dee Eolin, 6 | Sophie Mayolet, 3 | Lorraine Wright, 1 |
| Linda Fields, 1 | Connie McCarrick, 6 | Mary Young, 5 |
| Sherry Gehl, 11 | Erin McLaud, 5 | Yizhou Zhang, 1 |

Docents and Volunteers

Honorary docents, who have given more than 15 years of service to the Museum but are no longer able to provide tours, are:

- Philip Addabbo
Josephine Bickford
Eloise Hopkins
Mary Ellen Ivers
Lucille Richter

In September 2011, we were joined by a class of 10 docents in training:

- Christine Brazil
Carol Brennan
Sharon DeRusha
Kaori Heberle
Toni Hinchclif
Jennifer Kuhn
Pam Lally
Karen Navaie
Dudley Newell
Kevin Sives

In 2011, our volunteers worked a record number of hours—7,047—as they served at special events and helped many Museum departments.

Volunteers in 2011 were:

- | | | | |
|---------------------|--------------------|-----------------|-----------------|
| Elaine Acomb | Ruth Bonyak | Olivia Clark | Carolina Downie |
| Hilda Allington | Susan Brown | Michael Coletta | Peter Drobny |
| Lauren Andrews | Shirley Brzezinski | David Conway | Shirley Edsall |
| Samantha Atwell | Dasha Buduchina | Cara Curran | Max Erlacher |
| Dorothy Behan | Barbara Burdick | Sadie Cutler | Hunter Erway |
| Molly Behan | Nancy Burdick | Rose Darcangelo | Charles Evans |
| Lois Benjamin | Annette Bush | Beverly Dates | Nancy K. Evans |
| Billie Jean Bennett | Louise Bush | Shelby Davis | Judy Frandsen |
| Helen Bierwiler | Elizabeth Caroscio | Sara DeMitry | Alyssa Franklin |
| Gloria Bingaman | Margaret Carter | Hannah Dennison | Sherry Gehl |
| Melanie Bonyak | Sally Childs | Marilyn Denson | Susan Goodrich |
| Ronald Bonyak | Grace Clark | Sharon DeRusha | Anita Goodwin |

Terri Grace
Sophia Gudenrath
Renee Hall
Abigail Harkin
Virginia Hauff
Marlene Heikkila
Janis Hobbs-White
Samah Hoque
Barbara Hornick-Lockard
Annie Hou
Awanda Hunt
George Hunt
Suzanne Jeffery
Sally Johnson
Sydney Johnson
Christine Karatnytsky

Farhan Khan
Kasia Kieli
Margaret Kish
Marianne Kosty
Robert Kosty
Jean Krebs
Jerry Laughlin
June Laughlin
Rachel Leben
Kaitlyn Lembo
Anna Leonard
Earl Leonard
Earl Leonard Jr.
Casey Lewis
Jill Lewis
Les Lewis
Nina Listopadzki
Ashley Locey
Katie Lynch
Wesline Manuelpillai
Lee Mertson
Mildred Miles
Julie Miller
McKenna Murray
Liz Newman-Ehman

Amanda Oggeri
Jemi Ong
Kavita Patil
Janet Perdue
Connie Petro
McKenzie Putman
Roxanne Reed
Anna Rice
Barbara Riesbeck
Caroline Robinson
Alex Rosen
Pat Sabol
Betty Santandrea
Kacey Scheib
Susan Scorza
Connie Scudder
Adam Setzer
Courtney Setzer
David Shaddock
Pat Shaddock
Indira Sharma
Deborah Smith
Gisela Smith
Jessica Smith
Angela Sopp

Victoria Squires
Pat Starzec
Patrick Stevens
Joseph Stutzman
Maria Stutzman
Justin Sun
Shao-Fung Sun
David Terrio
Winifred Thom
Joan Tojek
Steve Tong
Dorothy Touschner
James Touschner
Phyllis Townsend
Prema Vaddi
Allison Wagner
Emily Wagner
Victoria Wagner
Ciera Webb
Eileen Wesneski
Sara Wessels
Katelyn Whalen
Judy Whitbred
Lauren Witmer
Radha Wusirika

Blood Sugar, *blown glass and sheet glass, acid-etched, bonded.* Tony Cragg (British, b. 1949), Germany, Wuppertal, 1992. Dimensions vary, about H. 90 cm, W. 210 cm (2011.3.115).



Development

The Corning Museum of Glass gratefully acknowledges the many donors, Members, foundations, and corporate contributors that supported its initiatives in 2011. Seventeen new individuals and couples joined the Museum's patron group, the Ennion Society.

One of the highlights of the year was the annual Ennion Society dinner, held on October 19 in the Museum's auditorium. One hundred seventy-two members of the Society and guests attended, and they enjoyed a celebration of the Museum's 60th anniversary. The evening included a surprise glassblowing demonstration by the master artist Lino Tagliapietra on the Museum's all-electric hot-glass stage. The event was graciously hosted by James B. Flaws, chairman of the Museum's Board of Trustees, and his wife, Marcia D. Weber. With Ennion Society member Richard Sphon, they assisted Mr. Tagliapietra with his demonstration. A sale of glass objects raised nearly \$19,650 for The Studio's Scholarship and Artist-in-Residence Fund.

Additional Ennion Society events in 2011 included private dinner receptions—at the homes of Society members—for “Meet the Artist” lecturers Susan Plum and Klaus Moje, “Meet the Astronomer” lecturer Scott Kardel, and “Meet the Musician” lecturer Dennis

James. Ennion Society members traveled to Venice for a tour that included visits to artists' studios and private glass collections.

Gifts given by members of the Ennion Society during the year were used to add to the collection an early 19th-century neoclassical glass vase that imitates the igneous rock porphyry. The acquisition of this vase was voted

Development and Membership



Porphyry vase, blown, tooled; bronze mounts, white marble. Germany, Berlin, design attributed to Karl Friedrich Schinkel, mounts by Werner and Mieth, about 1810. H. 34 cm, D. 27 cm (2011.3.177). Gift of the Ennion Society.

Ennion Society members visit the Palazzo Franchetti to view an exhibition by Lino Tagliapietra (center).



Jane Spillman, curator of American glass, conducts a tour of the exhibition “Mt. Washington and Pairpoint: American Glass from the Gilded Age to the Roaring Twenties” for Museum Members.

upon by members of the Directors’, Curators’, Sustainers, and Collectors Circles of the Society. A successful campaign raised \$250,000 toward the purchase of *Les Hommes noirs* by Emile Gallé and Victor Prouvé (see pages 5–6).

In December, Ennion Society members were invited to preview our Holiday Open House glass sale. The Studio Holiday Open House weekend raised over \$40,000 for The Studio’s Scholarship and Artist-in-Residence Fund. Proceeds from glass auctions on Celebrity Cruises’ Solstice-class ships added \$130,767 to the Museum’s Glassmaking Scholarship Fund.

Grants awarded in 2011 included \$33,410 from the New York State Council on the Arts for general operating support, \$12,500 from the F. M. Kirby Foundation, \$10,000 from the National Endowment for the Arts for Web-based thematic tours, \$10,000 from The Dana Foundation for studio scholarships, and \$3,550 from The Triangle Fund to support The Studio’s cooperative glassblowing and flameworking program with the Corning–Painted Post High School Learning Center.

Amy J. Schwartz
*Director, Development, Education,
 and The Studio*



Membership

The Museum’s membership program had a major makeover in 2011. We clearly heard our Members’ suggestions to simplify the membership levels. We had more than nine levels, which were based on demographics such as location and age. We reduced the categories to six, allowing our Members to choose the set of benefits that matters most to them. Many of our Members upgraded their levels during the year in order to take advantage of exclusive opportunities, such as “Meet the Artist” receptions and curator-led tours.

Our front-line staff, including Guest Services and the GlassMarket, does an impressive job of encouraging visitors to become Members. Their efforts helped us gain more than 750 new Members in 2011. The ability to purchase membership online has also helped our membership grow. As more people become comfortable with online transactions, there has been an increase in the purchasing of gifts of membership.

We continued to add programs and events that are important to our Members. The opening of the special exhibition, “Mt. Washington and Pairpoint: American Glass from the Gilded Age to the Roaring Twenties,” was very well attended. More than 270 Members joined us for the Members-only preview of the show, led by Jane Shadel Spillman, curator of American glass.

The “Meet the Artist” receptions included the unveiling of *Five Pods*, a mosaic sculptural piece more than six feet in diameter, made by Ann Gardner as the recipient of the 26th Rakow Commission. The artist and her work were introduced during the annual Seminar on Glass.

Our Saturday curator-led tours, offered to Members starting at the Friend level, were very popular. About 200 Members participated in these tours during the year. Another valuable benefit, beginning at the Donor level, is inclusion in the North American Reciprocal Museum program, which allows our Members free admission at various museums around the country.

Miriam Martinez
Member Services Specialist

Donors to the Glass Collection

The generosity of 93 donors allowed the Museum to add 886 objects to the collection during the year.

Anonymous

Two sculptures, *Red Root* and *Running Cold*. U.S., Stanwood, WA, and Brooklyn, NY, Nancy Bowen, 1999.

Ring in original packaging, *U Ring*. Australia, Melbourne, VIC, Blanche Tilden, 2003.

Diane and Walter Ariker (and family), Orange, CT

Vessel, untitled. France, Villetelle, Alain and Marisa Bégou, 1998.

Marvion E. and Esther D. Ashburn, Irvine, PA

Thirteen Christmas tree light bulbs and one original Christmas tree light bulb box. U.S., General Electric, 1909–1945.

Egbert Hal and Jean C. Bogardus, Ancramdale, NY (in memory of Margaret Kluepfel Bogardus)

Beaker. Germany, Gernheim glasshouse, 1825–1875.

Elizabeth, Sarah, and Amy Braunstein, Atlanta, GA (in memory of their grandmothers, Dinah Braunstein and Edith Schraibman)

Perfume bottle (and stopper) with two doves, *L'Air du temps*. France, Wingen-sur-Moder, Cristal Lalique, Robert Ricci and Marc Lalique, distributed by Parfums Nina Ricci, 1951.

Kenneth and Helen Braunstein, Atlanta, GA

Unfinished goblet with squirrel stem. U.S., Toledo, OH, Libbey Glass Company, 1933.

Frank A. Breit and C. Pauline Breit, Rochester, NY (in memory of Robert Breit)

Vase with flowers. France, Nancy, Cristallerie d'Emile Gallé, about 1910–1911.

The Family of Thomas S. Buechner, Corning, NY

Painting, *The Corning Museum of Glass*. U.S., Corning, NY, Thomas S. Buechner, about 1980–1985.

Cameros Family Lead Trust, Rochester, NY (in memory of Nancy Sonner Cameros) (funds, purchased in part)

Sculptural vessel, *Box Drum*. U.S., Seattle, WA, Preston Singletary and Dante Marioni, 2011.

Chappell Gallery, New York, NY (gift of the artists and the gallery)

Panel, *Study 1*. Czech Republic, Prague, Vladimír Kopecký, 1989.

Sculpture, *Sirena*. Czech Republic, Prague, Lada Semecka, 2002.

Vessel, *Collective*. Australia, Canberra, ACT, Ben Sewell, 2005.

Mary Hale and M. Blair Corkran, Washington, DC

Sculpture, *Lynx after a Sketchbook Page by Albrecht Dürer*. Germany, Düsseldorf, and Poland, Warsaw, Marta Klonowska, 2009.

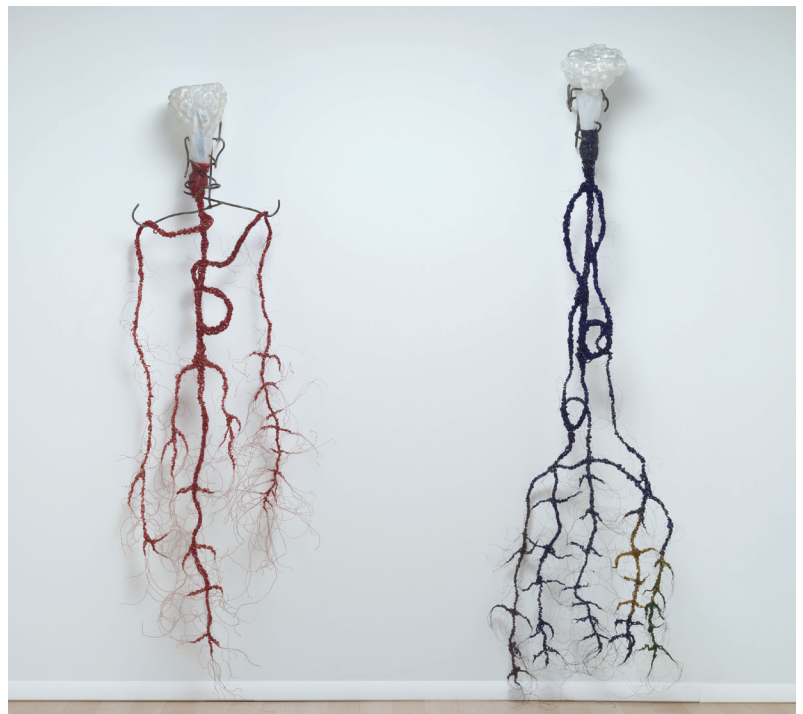
Corning Incorporated, Corning, NY

Fifteen finished glass pieces. U.S., Corning, NY, Steuben Glass Inc., various designers, 1959–2008.

Organic chemistry kit with original case. U.S., Corning, NY, Corning Incorporated, probably 1970–1989.

Donors to the Museum

Red Root and Running Cold, mold-blown, beads; steel, wire. Nancy Bowen (American, b. 1955), U.S., Stanwood, WA, and Brooklyn, NY, 1999. Taller: H. 195.6 cm, W. 83.8 cm (2011.4.189, .190). Anonymous gift.



Painting of Thomas S. Buechner, *Self-Portrait*. U.S., Thomas S. Buechner, 1987.

Painting of Thomas S. Buechner, *TSB in Bavarian Hat*. U.S., Corning, NY, Thomas S. Buechner, 2007.

Seventy cutting masters and various models, molds, and blanks. U.S., Corning, NY, Steuben Glass Inc., various designers, various dates.

Acer Iconia Tab, HTC ThunderBolt phone, Lenovo ThinkPad Tablet, Lenovo ThinkPad X1, Samsung Galaxy Tab 10.1, Sony Bravia NX72 60-inch LCD digital color television, and T-Mobile Samsung Galaxy S 4G phone. Made with Corning Incorporated products, various dates.

Lynx after a Sketchbook Page by Albrecht Dürer, cut colored glass, bonded; metal framework; framed digital inkjet print on paper. Marta Klonowska (Polish, b. 1964), Germany, Düsseldorf, and Poland, Warsaw, 2009. Lynx: H. 86 cm, W. 50 cm; print: H. 46.5 cm, W. 60 cm (2011.3.2). Gift of Mary Hale and M. Blair Corkran.

Jean M. Crawford, Fairfield, CT

Twenty-eight pieces of pressed glass. U.S., Pittsburgh, PA, Adams & Company, about 1891.

Thomas P. Dimitroff Family, Corning, NY

Vase with engraved Rhineland scenes. Bohemia, 19th century.

Footed vase. England, Stevens & Williams Ltd., 1890–1899.

Leatrice S. Eagle, Potomac, MD

Two necklaces. U.S., Stanwood, WA, William Morris Studio for Donna Karan New York, William Morris, 2004.

James H. Ecker, Corning, NY

Glass blind component. U.S., Corning, NY, invented by Elias Hungerford, 1867–1868.

Gerald M. Eggert, Rochester, NY (in memory of Clara Ryden Eggert)

Goblet. U.S., possibly Midwest, about 1893.

“Rope” vase. U.S., Milton, WV, Blenko Glass Company Inc., 1947.

Crackle “Crimped Top” vase. U.S., Milton, WV, Blenko Glass Company Inc., Winslow Anderson, 1948.

“Bubble Wrap” vase. U.S., Milton, WV, Blenko Glass Company Inc., Wayne Dale Husted, 1960.

Pitcher. U.S., Milton, WV, Blenko Glass Company Inc., Joel Philip Myers, 1965.

Decanter with stopper. U.S., Milton, WV, Blenko Glass Company Inc., Joel Philip Myers, 1971.

Gerald M. Eggert, Rochester, NY (in memory of Christine Clara Weiss)

Gold Aurene bud vase with metal foot. U.S., Corning, NY, Steuben Glass Works, 1903–1922.

Decanter with stopper. U.S., Milton, WV, Blenko Glass Company Inc., Joel Philip Myers, 1965.

Bottle-shaped vase. U.S., Milton, WV, Blenko Glass Company Inc., Joel Philip Myers, 1969.

Kate Elliott, Santa Fe, NM

Sculpture, *Rat Trap*. U.S., Stanwood, WA, Pilchuck Glass School, Richard Posner, 1972.

Emhart Glass Sweden AB, Sundsvall, Sweden

Parts and labor for independent section (IS) machines. Sweden, Emhart Glass, about 2010–2011.

Ennion Society of The Corning Museum of Glass, Corning, NY

Vase. Germany, Berlin, design attributed to Karl Friedrich Schinkel, bronze mounts by Werner and Mieth, about 1810.

The Rev. Donald Evans, Corning, NY

Five pieces of pressed glass in “Floral Ware”



pattern. U.S., Pittsburgh, PA, King, Son & Co., 1869–1891.

James B. Flaws and Marcia D. Weber,
Corning, NY

See The Houghton Endowment Fund.

**Daniel Greenberg, Susan Steinhauser, and
The Greenberg Foundation,** Los Angeles, CA
(in honor of Natalie G. Heineman and Ben W.
Heineman Sr.)

See The Houghton Endowment Fund.

William Gudenrath, Corning, NY

Pitcher. Czech Republic, about 2000.

Polly and John Guth, Dublin, NH
(funds, purchased in part)

Vessel, *Lightning Snake*. U.S., Seattle,
WA, Preston Singletary and Dante Marioni,
2011.

Alexander Hamilton, Manotick, ON, Canada
Gemel. Spain, 18th–19th century.

**The Harris Family, Hixson, TN (in honor
of Charles N. Harris (1926–2008))**

Five glass coins. U.S., Kingsport, TN, Blue
Ridge Glass, about 1943.

Ben W. Heineman Sr. Family, Chicago, IL

See The Houghton Endowment Fund.

**The Martha J. Herpst Estate, Titusville,
PA, and The Mrs. Jason Westerfield Estate,
Camden, ME (funds, purchased in part)**

Tumbler in “Comet” or “Horn of Plenty”
pattern. U.S., probably Pittsburgh, PA, M’Kee
Brothers, 1860–1870.

James R. and Maisie Houghton,
Corning, NY

See The Houghton Endowment Fund *and*
Elizabeth S. and Carl H. Pforzheimer III.

**The Houghton Endowment Fund; James B.
Flaws and Marcia D. Weber; Daniel Green-
berg, Susan Steinhauser, and The Greenberg
Foundation in honor of Natalie G. Heineman
and Ben W. Heineman Sr.; James R. and
Maisie Houghton; Ben W. Heineman Sr.
Family; E. Marie McKee and Robert Cole Jr.;
Elizabeth S. and Carl H. Pforzheimer III; and
Wendell P. Weeks and Kim Frock Weeks (funds,
purchased in part)**



Tumbler in “Comet” or
“Horn of Plenty” pat-
tern, pressed. U.S., prob-
ably M’Kee Brothers,
Pittsburgh, PA, 1860–
1870. H. 7.8 cm, D. 6.6
cm (2011.4.88). *Pur-
chased with funds do-
nated by the Martha J.
Herpst and Mrs. Jason
Westerfield Estates.*

Vase, *Les Hommes noirs*. France, Nancy,
Cristallerie d’Emile Gallé, Emile Gallé and
Victor Prouvé, 1900.

Lawrence Jessen, Frederick, MD

Goblet. U.S., Toledo, OH, Libbey Glass
Company, 1901–1910.

Dorothy-Lee Jones, Weston, MA

Fifty-two European and 76 American ob-
jects. Various makers and dates.

**F. M. Kirby Foundation, Morristown, NJ
(funds)**

Façon de Venise oil lamp. Probably Southern
Netherlands, 1750–1849.

**F. M. Kirby Foundation, Morristown, NJ
(funds, purchased in part)**

Three flacons and one vase. Czechoslova-
kia, Liberec (Gablonz), H. G. Curt Schlevogt,
about 1930.

**F. M. Kirby Foundation, Morristown, NJ, and
Richard and Judith Sphon, Painted Post, NY
(funds, purchased in part)**

Vessel, *Fuji HG31119*. U.S., Seattle, WA,
Lino Tagliapietra, 2011.

**The Karl and Anna Koepke Endowment
Fund, Kent, OH (funds, purchased in part)**

Engraved tumbler with three dogs, and
engraved cut-down goblet with man on

horseback. U.S., East Cambridge, MA, New England Glass Company, engraved by Henry Barnes Leighton, 1855–1870.

Nine engraved wineglasses, one miniature floral paperweight, and one bowl with etched decoration. U.S., East Cambridge, MA, New England Glass Company, 1860–1880.

Lyle P. Kriner and Marjorie C. Kriner, Morris, PA

Electric lamp with shade, and two electric lamp shades. Probably U.S., 1900–1925.

Frides Lameris VOF, Amsterdam, The Netherlands

Folding spectacles with case. Europe, 19th century.

James Langton, U.K.

One necklace, two trailed beads, 11 millefiori beads, three millefiori canes, and 10 millefiori cane slices. Indonesia, modern.

Anita León, Toronto, ON, Canada (in honor of Betty H. E. Sawyer)

Miniature coffee set. Italy, Murano, about 1962–1968.

Two apple paperweights. U.K., Cambridge, Midsummer Glassmakers, about 1981–1986.

Toledo Bottle, blown #475 Johns Manville marbles. Harvey K. Littleton (American, b. 1922), U.S., Toledo, OH, The Toledo Museum of Art, 1962. H. 16.2 cm, D. 6.5 cm (2011.4.77). Gift of the Harvey K. Littleton Family.



The Harvey K. Littleton Family, Spruce Pine, NC

Toledo Bottle. U.S., Toledo, OH, The Toledo Museum of Art, Harvey K. Littleton, 1962.

E. Marie McKee and Robert Cole Jr., Corning, NY

See The Houghton Endowment Fund.

Barbara H. Meek and John William Meek III, Naples, FL

Bowl. U.S., Corning, NY, possibly J. Hoare and Company, about 1890–1910.

Ann D. Mingione, Chesapeake, VA

Bowl. U.S., Middletown, NY, Tuthill Cut Glass & Co., C. G., 1900–1915.

Cocktail shaker with metal collar. U.S., Corning, NY, T. G. Hawkes and Company, 1920–1935.

The Mullen Memorial Fund, Birmingham, MI (funds, purchased in part)

Ice tub in “Excelsior” pattern. U.S., New Bedford, MA, Mt. Washington Glass Company, about 1894.

Mary Lammon Nitsche, Geneseo, NY

Miniature snifter set with original presentation case. Czechoslovakia, Karlovy Vary, Karlovarske sklo (Moser Glassworks), František Chocholatý, 1958.

Jessica and Bryn Oakleaf, Canton, CT

Pitcher. U.S., Northford, CT, Josh Simpson, 1975.

Tina Oldknow, Corning, NY

Vase prototype. U.S., Corning, NY, Steuben Glass, Sonja Blomdahl, 2000.

Three drinking glass prototypes. Czech Republic, Strání-Květná, Květná Moravian Glassworks for Steuben Glass LLC, 2010.

The Petracek Family, Sharon, CT (in memory of Helena Petracek)

Vase, *Lakeside Scene*. Czechoslovakia, Prague, Josef Drahoňovský, about 1922–1930.

Elizabeth S. and Carl H. Pforzheimer III, New York, NY, and James R. and Maisie Houghton, Corning, NY (funds)

Constellation Necklace. U.S., Portsmouth, NH, Kristina Logan, 2011.

See also The Houghton Endowment Fund.

Dr. and Mrs. Joseph A. Prezio, Troy, NY

Console set. U.S., Corning, NY, Steuben Division, Corning Glass Works, Frederick Carder, probably 1920–1932.

Verre de Soie vase. U.S., Corning, NY, Steuben Division, Corning Glass Works, probably 1925–1932.

Burchard P. Romain, Manchester, VT

Geissler tube. U.S., Orange, NJ, John Younk, 1876.

Phyllis Ross, New York, NY

Footed bowl with enameled decoration. Bohemia, Kamenický Šenov (Steinschönau), K. & K. Fachschule, designed by Adolf Beckert, about 1916.

**Betty Rau Santandrea, Painted Post, NY
(in memory of her parents, Ben and Margery Rau)**

Vase with female figure. Denmark, Fensmark, Holmegaards Glassworks, Per Lütken, 1957.

Giovanni Sarpellon, Venice, Italy

Seventy-five mosaic cane slices. Italy, Venice, Giovanni Battista Franchini, 1840–1843.

Five mosaic cane slices. Italy, Venice, Giacomo Franchini, 1845–1860.

Jane and Jack Sexton, White Lake, MI

Millefiori vase. France, Clichy-la-Garenne, Cristallerie de Clichy, 1845–1850.

Gladys M. and Harry A. Snyder Memorial Trust, Rochester, NY (funds)

Royal Flemish vase. U.S., New Bedford, MA, Mt. Washington Glass Company, 1888–1895.

Gladys M. and Harry A. Snyder Memorial Trust, Rochester, NY (funds, purchased in part)

Peach Blow ribbed bowl. U.S., New Bedford, MA, Mt. Washington Glass Company, 1886–1895.

Richard and Judith Sphon, Painted Post, NY

See F. M. Kirby Foundation.

Stanford and Elaine Steppa, Rockville, MD

Three hundred eighty-three objects. France, Wingen-sur-Moder, R. Lalique et Cie, René Lalique, various dates.

Steuben Glass LLC, Corning, NY

“Indigo” spiral bowl and “Sunset” trillium bowl from the Luminescence Collection. U.S., Corning, NY, Steuben Glass LLC, Donald Polard, 2011.

“Smoke” olive dish from the Luminescence Collection. U.S., Corning, NY, Steuben Glass LLC, John Dreves, 2011.

Kanako Togawa, Osaka, Japan

Panel, *To Be Born*. U.S., Rochester, NY, Rochester Institute of Technology, Kanako Togawa, 2011.

Kenneth R. Treis Fund of the Greater Milwaukee Foundation, Milwaukee, WI (funds)

Roundel showing Columbia with eagle and liberty cap. Bohemia, probably 1840–1860.

Jack Wax, Richmond, VA

Sculpture, *Beholden*. U.S., Penland, NC, Penland School of Crafts, Jack Wax, 1997.

Sculpture, *Host (Gold)*. U.S., Normal, IL, and Lancaster, PA, Jack Wax, 1997.

Sculpture, *Host (Iron)*. U.S., Penland, NC, and Lancaster, PA, Jack Wax, 1997.

Wendell P. Weeks and Kim Frock Weeks, Corning, NY

See The Houghton Endowment Fund.

Sharon Oleksiak Weinberg, Pawtucket, RI

Sculpture with metal mount, *Life Study: Mia*. U.S., Pawtucket, RI, Steven I. Weinberg, 2005.

The Mrs. Jason Westerfield Estate, Camden, ME (funds)

Four pieces of pressed glass in “Comet” or “Horn of Plenty” pattern. U.S., probably Pittsburgh, PA, M’Kee Brothers, about 1860–1870.

See also The Martha J. Herpst Estate.

Ian McKibbin White, Freeport, ME

Painting of Thomas S. Buechner, *Self-Portrait*. U.S., Corning, NY, Thomas S. Buechner, 2005.

Joan D. Wilson, Dundee, NY (in memory of Raymond P. Wenderlich and Thelma M. Wenderlich)

Box of 133 #20 buttons, and box of 110 #18 buttons. U.S., Corning, NY, Corning Glass Works, about 1944–1946.

Wende Wilson (in memory of her parents, MacGregor and Eileen Wilson, who lived in Hamburg, NY)

Tyrian vase. U.S., Corning, NY, Steuben Glass Works, about 1916.

Dr. and Mrs. Maris Zuika, Kalamazoo, MI (in memory of Austra Zuika)

Vase. U.S., Sandwich, MA, Cape Cod Glass Company, 1860–1870.

❖ ❖ ❖

Donors to the Rakow Research Library

Financial Donors

Marvion E. and Esther Ashburn,
Irvine, PA

Jay and Micki Doros, Irvington, NJ

Lucinda J. Gelfius, Edinburgh, IN

Lenders of Materials

Dave Buck, Corning, NY

Nicholas M. Dawes, New York, NY

Alan and Cathy Gleason, Campbell, NY

Eric Hilton, Odessa, NY

Elmer V. Huels, Lindley, NY

Anne Price, Corning, NY

UrbanGlass, Brooklyn, NY

Donors to the Library Collection

Academy of Arts, Architecture, and Design
in Prague, Prague, Czech Republic

Carole Adrian, New York, NY

American Cut Glass Association, Elkland, PA

American Institute of the History of Pharmacy,

University of Wisconsin, Madison, WI

Amici dei Musei di Roma, Rome, Italy

Ancient Civilizations, Montoursville, PA

Anastasios Antonaras, Museum of Byzantine

Culture, Thessaloniki, Greece

The Art Economist Co., Santa Fe, NM

Asahi Glass Company Ltd., Yokohama, Japan

Marvion E. and Esther Ashburn, Irvine, PA

The Auctions at Rookwood LLC, Cincinnati,
OH

N. Huda Awad, Swansea, U.K.

B & P Lamp Supply Co., McMinnville, TN

Lee F. Baldwin, Corning, NY

Rosa Barovier Mentasti, Venice, Italy

The Bead Museum, Glendale, AZ

Tom Bellhouse, Alto, GA

Berengo Fine Arts, Venice, Italy

Philippa Beveridge, Barcelona, Spain

Frederick and Jeannie Birkhill, Pinckney, MI

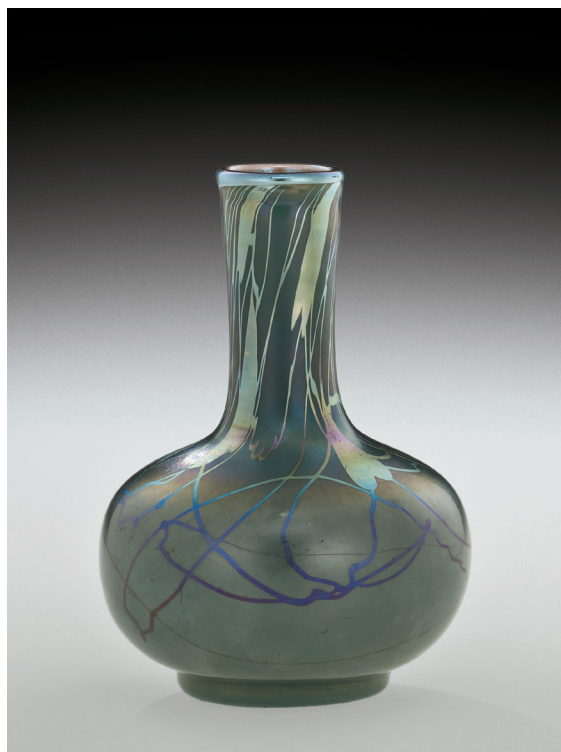
Pat Blair, American Cut Glass Association,

Escondido, CA

Egbert Hal and Jean C. Bogardus, Ancram-
dale, NY

*Tyrian vase, blown.
U.S., Corning, NY,
Steuben Glass Works,
about 1916. H. 12.8
cm, D. 9 cm (2011.4.83).
Gift of Wende Wilson in
memory of her parents,
MacGregor and Eileen
Wilson.*

*Vase, blown, cased, cut.
U.S., Sandwich, MA,
Cape Cod Glass Com-
pany, 1860–1870.
H. 24.8 cm, D. 12 cm
(2011.4.196). Gift of Dr.
and Mrs. Maris Zuika
in memory of Austra
Zuika.*



Boisgirard & Associés, Paris, France
 Ethan Bond-Watts, Charlotte, VT
 Bernadette Bourguignon, Fumel, France
 Leopold Bragard, Retinne, Belgium
 Robert H. and Margaret R. Brill, Corning, NY
 British Glass Foundation, Dudley, U.K.
 Keith Brocklehurst, International Festival of Glass, Stourbridge, U.K.
 Bronner's Christmas Wonderland, Frankenmuth, MI
 John T. Brown, Corning, NY
 Shannon Brunskill, Dallas, TX
 György Buczkó, Budapest, Hungary
 Thomas S. Buechner III, Corning, NY
 Bukowskis, Stockholm, Sweden
 Bullseye Glass Company, Portland, OR
 Enrico Caruso, Museo Archeologico di Aidone, Aidone, Italy
 José Fernández Castrillo, Barcelona, Spain
 Chazen Museum of Art, Madison, WI
 Chrysler Museum of Art, Norfolk, VA
 Michael E. Clark† and Jill Thomas-Clark, Elmira, NY
 Sherman Clarke, Alfred, NY
 Dan Clayman, East Providence, RI
 Comitato Nazionale Italiano A.I.H.V., Venice, Italy
 Corning Incorporated, Corning, NY
 Barbara R. Coulter, Easton, MA
 Cowan's Auctions Inc., Cincinnati, OH
 Hazel Cramer, Ithaca, NY
 Crystal Classics, Columbus, OH
 Mary Cullen, Houston, TX
 Martha Custer, Painted Post, NY
 Dartington Crystal, Torrington, U.K.
 Isabel De Obaldía, Panama City, Panama
 Robert Deutsch, Old City of Jaffa, Israel
 Thomas Dimitroff, Corning, NY
 Stephanie Disch, Turlock, CA
 Diva Fine Art, Paris, France
 Dorflinger Glass Museum, White Mills, PA
 Dennis Doros, Milestone Film & Video, Harrington Park, NJ
 Jay and Micki Doros, Irvington, NJ
 Alain Drouin, Montreal, QC, Canada
 Duralex USA Inc., New Castle, DE
 Mathew Durran, London, U.K.
 Ian Dury, Stourbridge Glass Engravers Ltd., Stourbridge, U.K.
 Edgewood Orchard Galleries, Fish Creek, WI
 Dolores Elliott, Johnson City, NY
 Kate Elliott, Santa Fe, NM
 James J. Elsis, Aquebogue, NY
 English Heritage, Swindon, U.K.
 Louise Erskine, Paxton, MA
 Fenton Art Glass Company, Williamstown, WV
 Les Films Perception, Montreal, QC, Canada
 Fire Mountain Gems and Beads, Grants Pass, OR
 Dominic Fondé, Art Glass Solutions, Republic of Singapore
 Bert Frijns, Burgh-Haamstede, The Netherlands
 Gallery M, Oaklands Park, SA, Australia
 Ann Gardner, Seattle, WA
 Gemeente Amsterdam, Amsterdam, The Netherlands
 Genverre, Généalogie des Verriers d'Europe, Sarrebourg, France
 Klaus Gerke, K-Films, Paris, France
 Simona Gheorghe, Museum of Oltenia, Craiova, Romania
 David Gibernau Bach, Tot Vidre Gibernau S.L., Mataró (Barcelona), Spain
 GIC Biennale Executive Committee, Icheon, Republic of Korea
 Glasgalerie Michael Kovacek, Vienna, Austria
 Glashütte Lamberts GmbH, Waldsassen, Germany
 Glass Eye Studio Corp., Seattle, WA
 Brad Gougeon, Midland, MI
 Christine Groves, National Toothpick Holder Collectors' Society, Archer City, TX
 William Gudenrath, Corning, NY
 Monica Guggisberg and Philip Baldwin, Paris, France
 Guild.com, Madison, WI
 Elizabeth Gulacsy, Scholes Library, Alfred University, Alfred, NY
 John H. J. and Polly Guth, Dublin, NH
 Habatat Galleries, Royal Oak, MI
 Robert Hall, London, U.K.
 Sarah Hall and Gabi Weiss, Toronto, ON, Canada
 Gordon H. Hancock, East Patchogue, NY
 Virginia Hauff, Painted Post, NY
 Hawk Galleries, Columbus, OH
 Jay Hawkins, West Newton, PA
 Jeffrey Rush Higgins, Syracuse, NY
 Bert Holvast and Barbara Walraven, Castelo de Vide, Portugal
 Beth Hylen, Corning, NY
 Richard Hylen, Painted Post, NY†
 Scott Jacobsen, Scott Jacobsen Gallery, New York, NY
 Richard Jolley Studio, Knoxville, TN
 Olive Jones, Ottawa, ON, Canada
 James D. Julia Inc., Fairfield, ME
 Dafna Kaffeman, Tel Aviv-Jaffa, Israel
 Ketchikan Museums, Ketchikan, AK
 Kingsley North Inc., Norway, MI

Käthe Klappenbach, Stiftung Preussische
 Schlösser und Gärten, Potsdam, Germany
 Lothar Knauf, Knauf, Engis, Belgium
 Knife Rests of Yesterday & Today, Pleasanton,
 CA
 Florian Knothe, Corning, NY
 Knoxville Museum of Art, Knoxville, TN
 Koganezaki Glass Museum, Koganezaki, Japan
 Stephen Koob and Lisa Goldberg, Corning, NY
 Barbara Krueger, Hartland, MI
 Christian Kuhn, Vienna, Austria
 Kunst- und Auktionshaus Dr. Jürgen Fischer,
 Heilbronn, Germany
 Louis La Rooy, Van Tetterode Beheer B.V.,
 Amsterdam, The Netherlands
 Janette LeFrancq, Brussels, Belgium
 Robin Lehman, Rochester, NY
 Steve Levine, Wayne, NY
 Libbey Glass Inc., Toledo, OH
 Susan Liebold, Schneidemühle, Germany
 Henry J. Loftus Jr., Dorflinger-Suydam Wild-
 life Sanctuary, White Mills, PA
 Hans-Martin Lorch, Lorch + Seidel Contem-
 porary, Berlin, Germany
 Ruth de Lorraine, Campbell, NY
 Eric Louet, Musée du Pays de Conches,
 Conches, France
 Palo Macho, Bratislava, Slovakia
 Amélie Marcilhac, Paris, France
 Phyllis Martin, Corning, NY
 Daniel Massart, Manage, Belgium
 Evelyn McCarthy, Corning, NY
 Mark McDonnell, Kentfield, CA
 Donna McGrady, Waynetown, IN
 The Metropolitan Museum of Art Store, New
 York, NY
 Yoriko Mizuta, Hokkaido Museum of Modern
 Art, Sapporo, Japan
 Klaus Moje, Kingston, ACT, Australia
 Yvonne Moretti, Miami, FL
 Moser, Karlovy Vary, Czech Republic
 Musée de l'Ecole de Nancy, Nancy, France
 Musée des Beaux-Arts, Chartres, France
 Musée du Verre, Carmaux, France
 The Museum at FIT, New York, NY
 Museum der Westlausitz Kamenz, Kamenz,
 Germany
 Nagel Auctions, Stuttgart, Germany
 Barbara Nanning, Amsterdam, The Nether-
 lands
 Garry Nash, Sunbeam Glassworks, Auckland,
 New Zealand
 Charles G. Nitsche, Geneseo, NY
 Jonathan Oakleaf, Canton, CT
 Tina Oldknow, Corning, NY
 Youngsook Pak, London, U.K.
 Stéphane Palaude, Marchais, France
 Palm Springs Desert Museum, Palm Springs,
 CA
 Ashley Parker, Malvern–Hot Spring County
 Library, Malvern, AR
 Dr. Paul D. and Elmerina L. Parkman,
 Kensington, MD
 Christopher Perry, Yucca Valley, CA
 Mary-Ellen Earl Perry, Walworth, NY
 Ann Petracek, John Petracek, and Joseph
 Petracek, Sharon, CT
 Karlye Ann Gill Pillai, Latham, NY
 Sheila R. Pinsker, Washington, DC
 Oldřich Plíva, Jablonec nad Nisou, Czech
 Republic
 Portland Press, Seattle, WA
 Christian Poulin, Espace Verre, Montreal,
 QC, Canada
 Mary Katherine Powers, Odenton, MD
 Anne Price, Corning, NY
 R 20th Century Design, New York, NY
 Rings and Things, Spokane, WA
 Richard Ritter, Bakersville, NC
 Pavla D. Rossini, Copenhagen, Denmark
 Roger H. D. Rowley, Pritchard Art Gallery,
 University of Idaho, Moscow, ID
 Alberto Saroldi, Turin, Italy
 David D. Schepps, Aventura, FL
 Johnathon Schmuck, Santa Cruz, CA
 Schneider + Fichtel GmbH, Rottenburg am
 Neckar, Germany
 Schöler & Co. GmbH, Kremsmünster, Austria
 Margaret M. Schuckers, Corning, NY
 Amy Schwartz, Corning, NY
 Susan W. Schwartz, State College, PA
 Scottish Glass Society, Glasgow, U.K.
 Giampaolo Seguso, VetroVetro, Venice, Italy
 Marcia Shepherd, Chesapeake, VA
 William H. Sheriff, Silver Spring, MD
 Siegelson, New York, NY
 Raphael Simon, Corning, NY
 Buster Simpson, Seattle, WA
 Meera Singh, Far Hills, NJ
 Sloans & Kenyon, Chevy Chase, MD
 L. E. Smith Glass Co., Sewickley, PA
 Val and Rob Smith, LABAC, Leawood, KS
 Antony E. Snow, Wiltshire, U.K.
 Jane Shadel Spillman, Corning, NY
 Paul J. Stankard, Mantua, NJ
 Elaine and Stanford Steppa, Rockville, MD
 Steuben Glass LLC, Corning, NY
 Norman D. Stevens, Storrs, CT
 Stockholms Auktionsverk, Stockholm, Sweden
 Rudolf von Strasser, Vienna, Austria

Suntory Museum of Art, Tokyo, Japan
 Gay LeCleire Taylor, Woodbine, NJ
 Stefani Terreni, Sindaco del Comune di
 Empoli, Empoli, Italy
 Ana Thiel, Guanajuato, Mexico
 Kevin and Norma-Jean Thurber, Brunswick,
 ME
 TIAA-CREF, New York, NY
 TMSK Magazine, Shanghai, China
 Mihai Topescu, Târgu Jiu, Romania
 Toyama City Planning and Coordination
 Division, Toyama City, Japan
 Traver Gallery, Seattle, WA
 University of Massachusetts Press, Amherst,
 MA
 Willy Van den Bossche, Schoten, Belgium
 Anne Vanlatum, Musée-Atelier du Verre, Sars-
 Poteries, France
 Wallace Venable, Morgantown, WV
 Katerina Verguelis, Giv'atayim, Israel
 Vitromusée Romont, Romont, Switzerland
 John E. Waterman, Boca Raton, FL
 G. G. Weiner, The Lalique Gallery at the
 White Lion Garage, Brighton, U.K.
 John J. Weishar, Weishar Enterprises,
 Wheeling, WV
 Dick Weiss, Seattle, WA
 Judy Whitbred, Campbell, NY
 Ian McKibbin White, Freeport, ME
 David Whitehouse, Corning, NY
 Karol Wight, Corning, NY
 Jerry and Virginia Wright, Corning, NY
 Yan Zoritchak, Talloires, France
 Czeslaw Zuber, Cachan, France
 Toots Zynsky, Providence, RI

† Deceased

❖ ❖ ❖

Donors to The Studio

We thank the foundations, individuals, and companies that made generous donations of funds and materials to The Studio's programs in 2011.

Association of Israel's Decorative Arts, New
 York, NY
 Susan Bartlett, Laguna Beach, CA
 Brian Batdorf, New Albany, IN
 Jeremy and Angela Burdge, Hilliard, OH*
 Ron Carlson, Cardiff, CA*
 William Couig, New York, NY*
 Dr./Mrs. Rob Elgar, Plainfield, IL

Sue Richers Elgar, Plainfield, IL
 Allison Fonda, Tyler Glass Guild, Philadel-
 phia, PA
 Jane and Terry Francescon, Moline, IL
 Patrick Frost and Carrie Battista, Darien, IL*
 Steve and Marcia Funk, Palm Beach Gardens,
 FL*
 Nancy Gerbasi, Aiken, SC
 Chuck Gerson, Oklahoma City, OK
 Cheryl K. Goldenberg, Metropolitan Con-
 temporary Glass Group, Scarsdale, NY
 Lee and Tarie Harris, Vero Beach, FL*
 Kate Herlihy, Canberra, ACT, Australia
 Samantha Hookway, Tyler Glass Guild, Phila-
 delphia, PA
 Dennis James, Addison, NY
 Patrick Jeffries, New Holland, PA*
 Mr./Mrs. Gene W. Kammerer, East Brunswick,
 NJ* *
 Marianne Kelley, Oklahoma City, OK
 Steven L'Heureux on behalf of Laticia Stauffer,
 Richmond, VA*
 Sheldon Lustig, Deerfield, IL*
 Joseph A. Macri, M&T Investment Group,
 Harrisburg, PA
 Elizabeth G. Miller, Pound Ridge, NY
 Moore Tools for Glass, Port Townsend, WA
 Gina Moran, Rexford, NY
 Dr. Michael Nagel, St. Davids, ON, Canada



Tim Rogers teaches glassblowing during The Studio's Beginning Glassblowing and Flameworking Workshop for teenagers.

Mary Jo Nettles, Solana Beach, CA
 Pencie Newton, Burke, VA
 Northstar Glassworks Inc., Tigard, OR
 George Pollock, Bayamón, Puerto Rico
 David Porter, East Lansing, MI
 James Rideout and Diane Murray, Hickory,
 NC
 Dave Schimmel, Glass Brokers, Duryea, PA
 Dr. Susan W. Schwartz, State College, PA
 Helaina Semmler, Mt. Laurel, NJ
 Dana Smith, Carrboro, NC
 David Tiller, Norman, OK
 Trautman Art Glass, West Linn, OR
 Adriana Walters, Greenfield, WI*
 Kevin Ward, Chicago, IL
 William Woodruff, Coopersburg, PA
 Jay Okun Yedvab, Toronto, ON, Canada

* For the Elio Quarisa Scholarship Fund

** For the Christopher John Kammerer
 Memorial Scholarship Fund

❖ ❖ ❖

Gifts in Kind

Special thanks to the businesses and individuals that provided goods, services, and gifts of time and talent to the Museum in 2011.

Absolute A Cappella, Cornell University,
 Ithaca, NY
 Aces, Corning, NY
 Christine Adams, Corning, NY
 All Saints Academy, Corning, NY
 Alternative School for Math and Science,
 Corning, NY
 Anthony Road Wine Company, Penn Yan, NY
 Atwater Estate Vineyards, Hector, NY
 Dale Bryant, Elmira, NY
 Buttonwood Grove Winery, Romulus, NY
 Frederick Carder Elementary School, Corning,
 NY
 Casa Larga Vineyards, Fairport, NY
 Cascata Winery, Watkins Glen, NY
 Celebrity Cruises Inc., Miami, FL
 Chateau LaFayette Reneau, Hector, NY
 Chemung Valley Montessori School, Elmira,
 NY
 Catherine Clark, Corning, NY
 Corning Brass Works, Corning, NY
 Corning Christian Academy, Corning, NY
 Corning Free Academy Middle School,
 Corning, NY
 Corning Gaffer District, Corning, NY

Corning–Painted Post East High School,
 Corning, NY
 Corning–Painted Post West High School,
 Painted Post, NY
 Crystal Chords, Corning, NY
 Damiani Wine Cellars, Hector, NY
 Lynn Dates, Corning, NY
 Dr. Frank’s Vinifera Wine Cellars, Hammonds-
 port, NY
 James Duffy, Elmira, NY
 Erwin Valley Elementary School, Painted Post,
 NY
 Shawn Farwell, Corning, NY
 Finger Lakes Region Vintage Chevrolet Club
 of America, Elmira, NY
 Fox Run Vineyards, Penn Yan, NY
 Fulkerson Winery, Dundee, NY
 Maria Strinni Gill, Painted Post, NY
 Lisa Gillis, Corning, NY
 Michael K. Ginalski, Corning–Painted Post
 Area School District, Painted Post, NY
 Glenora Wine Cellars Inc., Dundee, NY
 Maria Goldwyn, Painted Post, NY
 Hugh Gregg Elementary School, Corning, NY
 Hazlitt 1852 Vineyards, Hector, NY
 Heron Hill Winery, Hammondsport, NY
 Marie Herow, Painted Post, NY
 Hickory Hollow Wine Cellars, Dundee, NY
 Sharron Holland, Watkins Glen, NY
 Holy Family Fifth-Grade Band, Elmira, NY
 James Horton, Painted Post, NY
 Hunt Country Vineyards, Branchport, NY
 Joni Kehoe, Corning, NY
 Keuka Lake Vineyards, Hammondsport, NY
 King Ferry Winery, King Ferry, NY
 Knapp Winery and Vineyard, Romulus, NY
 Lakewood Vineyards, Watkins Glen, NY
 Lindley–Presho Elementary School, Painted
 Post, NY
 Marina Liriano, Corning, NY
 Stephanie Manning, Painted Post, NY
 McGregor Vineyard, Dundee, NY
 The Men of Last Call, Cornell University,
 Ithaca, NY
 Miles Wine Cellars, Himrod, NY
 Katherine Miller, Corning, NY
 Montezuma Winery, Seneca Falls, NY
 Northside Blodgett Middle School, Corning,
 NY
 Erin O’Leary-Brown, Painted Post, NY
 Sheila Ortiz, Corning, NY
 Kent Phillips Elementary School, Corning, NY
 Prejean Winery, Penn Yan, NY
 PTA Reflections Program, Corning, NY
 Connie and Josh Randall, Painted Post, NY

Ravines Wine Cellars, Hammondsport, NY
 Red Newt Cellars, Hector, NY
 Rockwell Museum of Western Art, Corning,
 NY
 Rooster Hill Vineyards, Penn Yan, NY
 Lisa Rossi-Sullivan, Corning, NY
 Rodi Rovner, Corning, NY
 Jennifer Seaman, Elmira, NY
 William E. Severn Elementary School, Cor-
 ning, NY
 Six Mile Creek Vineyard, Ithaca, NY
 Calvin U. Smith Elementary School, Painted
 Post, NY
 Standing Stone Vineyard, Hector, NY
 Teresa Telehany, Painted Post, NY
 Keenan Tolbert, Corning, NY
 Tuba Christmas, Horseheads, NY
 Village Square Harmony Barbershop Quartet,
 Painted Post, NY
 Wagner Vineyards, Lodi, NY
 Linda Cooney Wasser, Corning, NY
 White Springs Farm Estate Winery, Geneva,
 NY
 Winfield Elementary School, Corning, NY
 Birgitt Wolf-King, Painted Post, NY
 Megan Wukovitz, Corning, NY

❖ ❖ ❖

Donors to Museum Funds

The Corning Museum of Glass gratefully acknowledges individuals and organizations that made substantial financial gifts to its acquisitions and education programs in 2011. This list is exclusive of membership contributions. Complete lists of donors to the glass collection, the Rakow Research Library, The Studio, and the Museum's public programs will be found on pages 35–45.

Ennion Society

Lifetime Members

The Ben W. Heineman Sr. Family
 Stanford and Elaine Steppa

Directors' Circle (\$25,000 and above)

James B. Flaws and Marcia D. Weber
 Mr./Mrs. Carl H. Pforzheimer III
 Richard and Judy Sphon
 Wendell P. Weeks and Kim Frock Weeks

Curators' Circle (\$10,000–\$24,999)

Marian and Russell E. Burke III

Alan Cameros and Martha Gay Stewart
 Roy and Myra Gordon
 Daniel Greenberg and Susan Steinhauser
 Polly and John Guth
 Mr./Mrs. James R. Houghton
 E. Marie McKee and Robert Cole Jr.*
 Helene Safire

Sustainers Circle (\$5,000–\$9,999)

James K. Asselstine and Bette J. Davis
 Frederick and Jean Birkhill
 Jeremy and Angela Burdge*
 David Burger
 Kirk and Penny Gregg
 Dr. Susan W. Schwartz
 Peter and Cathy Volanakis

Collectors Circle (\$2,500–\$4,999)

Larry and Susan Aiello
 Bob and Brenda Brown
 Jeremy and Marci Cohen
 Pippa Cohen
 Tony and Moira Cohen
 Dr. Charles and the Rev. Virginia G. Deneka
 Walter and Karen Douglas*
 Jeffrey W. Evenson and Karyn L. Cepek
 Olivia and Harlan Fischer
 Lee and Tarie Harris
 James D. Houghton and Connie B. Coburn
 Mr./Mrs. Gene W. Kammerer*
 Dr./Mrs. Thomas C. MacAvoy
 Dr. Gregory A. Merkel*
 Robert Minkoff and Shelley Kushner
 Ann and Barry Nicholson*
 Barbara H. Olsen
 Richard and Joan Randles
 Kenneth R. Treis

Members (\$1,000–\$2,499)

John and Carole Allaire
 Dale and Doug Anderson
 Thomas and Ulrike Appelt*
 Kate and Ric Asbeck
 Gail O. and Elijah Baity*
 Susan Bartlett and Edouard de Limburg
 Stirum
 Robert A. and Renée E. Belfer
 Thomas E. and Barbara Blumer
 Mr./Mrs. Thomas Buckles
 Van C. and Susan H. Campbell
 Yi Chang
 Dr. Polly W. Chu and Bill Mattingly*
 Mary and Jack Cleland
 Sarah and Daniel Collins
 Charles R. and Trudy Craig

Patricia T. Dann
 Kenneth C. Depew
 Thomas P. and Peetie Dimitroff
 Leonard Dobbs
 Claudette M. Doran, CCD, and Eleanor T.
 Cicerchi, Claudette's International Design-
 ing Women LLC
 Jay and Micki Doros
 Drs. Robert and Caren Douenias
 Mr./Mrs. David Dowler
 Joe P. and Mary K. Dubendorfer
 Mr./Mrs. Robert Duke
 William Eggers and Deborah McLean
 Sue and Rob Elgar
 Roberta Elliott and Charles Wantman
 Mr./Mrs. Max Erlacher
 Alan and Lynette Eusden*
 Christopher T. G. Fish
 Mr./Mrs. John P. Fox
 Jane and Terry Francescon
 Jere Gibber and J. G. Harrington
 Robert and Patricia Gilchrist
 Robert J. and Martha E. Grassi*
 Vincent and Anne Hatton
 Denise A. Hauselt
 Ben W. Heineman Jr. and Cristine Russell
 Heineman
 Douglas and Katya Heller
 Mr./Mrs. Thomas Hinman*
 The Honorable/Mrs. Amory Houghton Jr.
 Mr./Mrs. A. C. Hubbard Jr.
 Drs. Allan Jaworski and Deborah M. Winn
 Kenneth L. Jobe and Rita Patel
 Linda E. Jolly*
 Sharon Karmazin
 Grace and Christopher Kelly*
 Ben and Tracy Kraner
 Mr./Mrs. Peter L. Krog
 Tamie Laurance
 Jon and Judith Liebman
 Mr./Mrs. Doron Livnat
 Kenneth W. Lyon and Sylvia Applebee Lyon
 Rick and Mary Beth Maxa
 Jean-Pierre and Laurette Mazeau*
 Mr./Mrs. Donald A. McCabe Jr.*
 Mary E. McEachern
 Lani McGregor and Daniel Schwoerer
 Ruthie and Charlie McLennan
 Drs. Thomas and Mila Meier
 Peter L. Meltzer
 Joseph A. Miller and Rachel C. Wood
 Lindsay Mills
 Mike and Frances Mohr
 Barbara Mullen

The Rev. Richard M. Murphy
 Karen J. Ohland
 Richard O'Leary
 Fran and Mary Helen Olmstead
 Sandra D. Palmer
 Christine and Michael Pambianchi
 Elmerina and Paul Parkman
 The Rev. James R. Pearce
 Prof. John V. B. Perry
 Dr./Mrs. William Plummer
 Richard E. Rahill
 Douglas and Shirley Reed
 Drs. Helmut and Ute Ricke
 James A. Rideout and Diane Murray*
 Christina Rifkin
 Mark and Kay Rogus*
 Myrna and John Ross
 Joseph J. Rothermel†
 Pamela and Glenn Schneider
 Josh Simpson and Cady Coleman
 John C. and Bonnie A. Sirianni
 Kristin and Charles Swain
 Mary Ann and Anthony Terranova
 Mr./Mrs. G. Thomas Tranter Jr.*
 Mary and Tony Tripeny
 Deborah Truitt
 Mr./Mrs. Robert Turissini
 Jason and Judith Walsh*
 Richard and Janet Weerts
 Robert and Barbara Weinberg
 Suzanne D. Welch and William D. Watson
 Tim and Paddy Welles
 Lucille Werlinich
 Mr./Mrs. Ian McKibbin White
 Tony and Ann Wimpfheimer
 Jay Okun Yedvab
 Carol Yorke and Gerard Conn
 Marianne W. and James D. Young

❖

Contributors (\$100–\$999)

Marvion and Esther Ashburn
 Mrs. Lee F. Baldwin
 Brian Batdorf
 Kate Herlihy
 James Kearns
 Dr./Mrs. Michael Nagel
 Joseph O'Toole and Matthew Clingerman*
 Dana Smith
 Frank S. Swain
 David Harrison Tiller
 Darryl M. Wood and Helene T. Wollin
 Bill Woodruff

Foundations, Trusts, Corporations, and Other Organizations

Acorn Hill Foundation Inc.
American Cut Glass Association – Eastern
Lakes and Mid-Atlantic Chapters
Kate and Ric Asbeck Fund of The Cleveland
Foundation
Association of Israel’s Decorative Arts
Robert A. & Renée E. Belfer Family
Foundation
F. Ross and Laura Jean Birkhill Family
Foundation
Jeffrey J. and Mary E. Burdge Charitable
Trust
Cameros Family Lead Trust
Celebrity Cruises Inc.
Claudette’s International Designing
Women LLC
Corning Incorporated
Corning Incorporated Foundation
The Dana Foundation
Fidelity Charitable Gift Fund, Advisor
Charitable Gift Fund
The Greenberg Foundation
A. C. and Penny Hubbard Foundation Inc.
The Karma Foundation
F. M. Kirby Foundation
Karl H. Koepke Trust
The Littleton Revocable Trust
Kenneth W. Lyon Trust
Market Street Trust Company
Metropolitan Contemporary Glass Group
National Endowment for the Arts
New York State Council on the Arts
Schwab Charitable Fund
Josh Simpson Contemporary Glass Inc.
Gladys M. and Harry A. Snyder Memorial
Trust
Richard J. and Judith Sphon Family Fund at
the Community Foundation of Elmira–
Corning and the Finger Lakes Inc.
Swagelok Foundation
Kenneth R. Treis Fund of the Greater
Milwaukee Foundation
The Triangle Fund
Tyler Glass Guild

Corporate Matching Gift Donors

Corning Incorporated Foundation
ExxonMobil Foundation
HSBC Community Philanthropic Programs
IBM Corporation
Johnson & Johnson Family of Companies

Gifts in Memoriam

Andrea Bronfman
Association of Israel’s Decorative Arts
Jeremy and Marci Cohen
Pippa Cohen
Tony and Moira Cohen

Nancy Sonner Cameros
Cameros Family Lead Trust

Jerome Harris
Lee and Tarie Harris

Anna and Karl Koepke
Karl H. Koepke Trust

William S. Mullen
Lisa Ackerman and Dan Baldwin
Barbara and John Ballantyne
Irvin P. Boynton
Russell and Susan Dixon
Theodore and Lois Elferdink
Glass Study Club
Lynn and Karen Herche
Dr. Bonta and Helen B. Hiscoe
Windsor and Kay Price

Elio Quarisa
Ron Carlson
William Couig
Patrick Frost
Steve and Marsha Funk
Lee and Tarie Harris
Steven L’Heureux on behalf of Laticia
Stauffer
Patrick Jeffries
Adriana Walters

Gifts in Tribute

William Gudenrath
Chuck Gerson

*Natalie G. Heineman† and Ben W.
Heineman Sr.*
The Greenberg Foundation

Norma Jenkins
Jay and Micki Doros

Chairman Kun-bee Lee of Samsung
Corning Incorporated

Eric Meek
E. Marie McKee and Robert Cole Jr.



* Gift matched by a corporate matching gift

† Deceased

Museum Contributing Members

The Corning Museum of Glass gratefully recognizes individuals and organizations that have joined at Contributing Membership levels (\$125 and above).

Corporate

Corning Incorporated

Association

Carder Steuben Club Inc.

Patrons (\$500–\$999)

Mr./Mrs. Dean C. Beeman
Mr./Mrs. W. Wallace Dyer Jr.
Dr. Dawn R. Howell
Randall T. Johnson
Mr./Mrs. David A. Lubin
Joan Lunney and William Idler
Mr./Mrs. Ted Marks
Tim and Paddy Welles
Marie and Allen Wolpert

Supporting (\$250–\$499)

Kevin and Dawn Able
Dr. Ann Abram and Steven Novak
Margery and Martin Adams
Lee Adelsberg
Jean Allen
Kirk and Denise Allen
Tracy A. Benson
Joshua Bishop and Maia Ambegaokar
Leroy and Anne Marie Boatwright
Michael B. Bono
Mark and Margaret Carson
Dr./Mrs. Isidore Cohn Jr.
Fred and Gail Coverer
Susan and Willson Craigie
Martha Custer and David Schissel
Lisa Daigle
Dr. Donald R. Dolan Jr.
Judith H. and Thomas Dwyer
Steve Ealick and Judith Virgilio
Mr./Mrs. Floyd W. English Jr.
Jeff and Beverley Evans
Dr./Mrs. Richard Fastiggi
A. J. Fratarcangelo
Glass Alliance of Los Angeles
Carrie Gugger and Jay Kelley
Cheryl and Julian S. Gutmaker
Tom Hansard*
Sandra L. Helton and Norman M. Edelson
Patricia Jackson
Edward Kern and Teresa Tkacik
J. Jerry and Sally M. Kersting
John Kirkman

Gretchen and Peter Koch
Semrin Korkmaz
Peter Kremelberg
Mr./Mrs. Leonard Leight
Howard J. Lockwood
Anna and Joseph Mendel
Angelo and Laurie Mitchell
Dr./Mrs. Michael Nagel
H. Barbara Nunan
Michael J. Pershern
Ben Riley
John and Kathy Stauffer
Peggy Steffel
Dr./Mrs. Radomir D. Stevanovic
John Thoman and Lee Venolia
John M. Ulrich and Lynn A. Pifer
Jim and Linda Varner
Mr./Mrs. Willard A. Vetter
Vanessa Somers Vreeland and Frederick
Vreeland
Brent and Susan Wedding
Robert Whiting and Audrey J. Randall
Whiting
Steven and Alexander Wight
William B. and Marion G. Wilmot
Darryl M. Wood and Helene T. Wollin
Mr./Mrs. Dennis Younge

Donors (\$125–\$249)

Don and Kay Adams
Dr./Mrs. Richard Ahola
Steve and Julie Albertalli
Kathleen D. and Dennis Albrecht
Peter S. and Jane Aldridge
Robert Alexander
Keith and Lois Allen
Mr./Mrs. Gerald Altilio
Richard and Leora Amir
Kathryn Anastasio and William Groome
Drs. Alan Angell and Beth Dollinger
Paul Austin and Martha Steuart
Barbara and Tom Babonis
Gregory Babonis and Sarah Ogburn
Elizbieta Bakowska and Pawel Bakowski
Mr./Mrs. Sam Balash Jr.
Karen Banos and Phil McClelland
Michael F. Barrett
Steven Mark Bavisotto
Michelle Bell and Joan Fogarty
Alan and Leslie Beller
Ronald and Gail Bellohusen
David L. Bender
Harvey and Janice Berger
William Bergfeld
Linda Bergstrom and James Keenly

Elizabeth Bevins
Klaus Biemann
M. Marguerite Bierman and Dr. Norman
Wengert
Amy Blake
Mrs. George B. Boettner
Melissa and Stephen Bohac
Sandra Borgardt
Dirck and Lee Born
Paul and Esther Borrelli
Amy J. Brabender
Carole A. Bradford
Dave Braun
Fay S. and Phelan A. Bright
Debbie Brodsky
Rachel Brumberg
Kendra T. and David F. Bruno
Frank G. and Lynne A. Bunke
Mr./Mrs. Sean I. Burns
Timothy and Bonnie Burzanko
Norma Bushorr
Mr./Mrs. Richard Byrne
Nicholas Calderone
Steven R. Campbell and Noreen Mitchell
Susan W. and Dennis Carlson
Karl Carter
Roger and Pauline Cary
Carol P. and James C. Case
Tsuhan and Shufen Chen
Mr./Mrs. Henry Church
Philip Cicerchi
Danielle B. Clair-Goulet
Katherine and William Clatanoff
Mr./Mrs. Thomas D. Clutz
Richard and Seija Cochran
Linda Cole
Marie H. Cole
Dr./Mrs. Robert E. Cole
Tim Coleman and Judy Smith-Coleman
Eugene and Anne Connell
George and Barbara Connors
Christine D. Conti-Collins and Daniel Collins
Margaret Corbit and Wesley Blauvelt
Marie T. and Bernard W. Costich
S. M. Dutch Craumer and Bonny Helm
Anne Crowley
William A. and Elizabeth O. Crowley
Carl and Susan Cuipyllo
Les Czarnota and Maria J. Kucza-Czarnota
C. Matthew and Elizabeth Dann
Joseph and Judith Darweesh
Laura and Laurence Davis
Robert C. Dean and Catherine Taylor
Lee DeBrish and Marline Riehle
Vivian I. Dedrick

Mr./Mrs. Daniel J. Duane
Jean and Richard Dulude
Sharon M. and Edward Dunscombe
Mr./Mrs. Robert L. Ecklin
Robert Edwards
Pamela Ellinger
Paul and Lori Engle
Gary and Blake Ennis
Eugene D. and Joan C. Eppen
John and Bea Fagnoli
Francis P. Fehlner
Stan Feingold
Lynne Feldman and Anthony Suchman
Sharon and Israel Feldman
Polly and Andrew Filson
Christine Forester
Timothy J. Frawley
Barrett and Peter Frelinghuysen
Deborah Friedman and Robert Breuer
Ronald and Gloria Friedman
Sheila and Raymond Frizzell
David Fuchshuber
Fundacio Centre del Vidre de Barcelona
Edward R. Galus and Andrea A. Cotner
John M. Garber and Diane P. Owen Garber
Dr./Mrs. Anthony E. Gerbasi
Richard H. Gilbert Jr.
William and June Gilligan
Louis and Cheryl Glasgow
Lynne Glikbarg
Judith Prentice Golby
Eugene and Anita Goldstein
Mr./Mrs. Carl F. Gortzig
Dr. Edward J. Grandt
Jeanne Grant
Dianne Gregg
Mr./Mrs. John Grunden
Suri and Veena Gurram
Charles Hall
Janet J. Hallahan
Bill and Mary Hallinan
Ellen and Bill Hamilton
Phillip Hamilton
Kathy K. and John Hanks
Judith and Robert Hannon
John Hansell
Betsy Harding
Mr./Mrs. Leif Hardison
Darlene and John Harris
Orville P. and Patricia T. Harris
Jane S. Hart and Judith Hart Halsema
Holly M. Hatch and Meghan D. Bunnell
Marie Haycox
Evelyn Hellstern and Mohammad Djafan
Hans A. Hess and Marta S. Ringelberg

Geoffrey S. and M. Joan Heywood
 Douglas and Helen Hill
 Stephen and Lynne Hill
 Melissa Hines
 Joy Hoffman and James Norton
 Debra and Kurt Hollasch*
 Curt and Rosemary Hooey
 Katie Hope and Ron Blackman
 Barbara Hornick-Lockard and Dennis L.
 Lockard
 David and Nina Howard
 F. M. Howell & Co.
 Mr./Mrs. Duane E. Humlicek
 Dr. James F. Hyde Jr.
 Amy and Brent Irvine
 Geraldine K. Izzo
 Dennis James
 Eric and Bridget Johnson
 Michael Johnson
 Mr./Mrs. Hank Jonas
 Janet Jones
 Janet Jones and Ben Marsh
 Kimberly and James Kaffenbarger
 Rodney and Christine Kaiser
 Ernestine and Franklin Kamp
 Christine Karatnytsky and John Curatolo
 Carl Kass and Della Lee Sue
 Mr./Mrs. Patrick L. Keeler
 Nancy King and Douglas Martin
 Anne Marie Kinlin
 Mr./Mrs. Richard B. Klein
 Tracey Knapp
 Richard Kniffin*
 Michael and Mary Kohan
 Glenn Kohnke and Jill VanDewoestine
 Jean K. Krebs
 Mildred C. Kuner
 Lawrence Kurtz and Paul Spencer
 Naveen Kurudi and Swetha Budda
 Michael J. Kuryla and Lisa Gallagher
 Ernestine W. and Roy A. Kyles
 Mr./Mrs. Gerry C. La Follette
 Bryan and Melissa Ladner
 Marilyn and Arnold Lampert
 Mr./Mrs. Brian Landis
 Camille LaParra and Stephen Goodman
 Dr./Mrs. Milton C. Lapp
 Nancy and Chanel LeBlanc
 Scott Ledbetter and John Heery
 Paula and Earl Leonard
 Linda and Rudolf Lienhard
 Edward and Carol Lincoln
 Roy and Blanche Love
 Richard and Ellen Luce
 Dr./Mrs. Edward J. Lukomski
 Mr./Mrs. Merrill Lynn
 Michael and Patricia MacDonald
 Martha and Tom Macinski
 Douglas Mack
 Kathryn C. and Alfred N. Mack
 Malcolm N. MacNeil
 Sheila Mahady
 Paula and Richard Mandel
 Audrey Mann
 Laura L. and Douglas A. Mann
 Bernard Margolis and Amanda Batey
 Becky and Joe Marinelli
 Thomas E. Mark and Amyjane Rettew
 Margery Marotta
 Drs. William and Phyllis Martin
 Matthew and Mary Maslyn
 Mariquita Masterson
 James and Christie McCarthy
 Elisabeth S. McKnight
 Sue McMaster and Paul Trist
 Karen E. Mead, M.D.
 Jennifer and Mrugendra Mehta
 Martha and Dady Mehta
 Embarek and Aliza Mesbahi
 Dr./Mrs. Kenneth K. Meyer
 Mary Cheek Mills
 Susan Z. and Joseph B. Milzman
 Maureen Mines and Mark W. Holman
 Joan Mintz and Robinson Markel
 Mr./Mrs. George Misnick
 Bruce and Normajeanne Mitchell
 Cecilia and Lawrence Moloney
 Elaine Montambeau and Bruce Harvey
 Laura Mooney
 Randal Morey and Carol Miller
 Mr./Mrs. John Morrash
 Rhonda Morton and Peter Chwazik
 Sherry and Larry Mulhollen
 Nathan and Miriam Munz
 Bruce R. Nelson
 Kirk Nelson
 Patricia Nilsen and Brian Eldridge
 Charles G. and Mary Lammon Nitsche
 Patricia and John Nozell
 George and Theresa O'Connell
 Daniel J. and Connie M. O'Herron
 Constantina Oldknow
 Dr./Mrs. John F. Olmstead
 Margaret M. Ostermann
 Joseph O'Toole and Matthew Clingerman*
 David Paar and Eric Avery
 Ron Palmer
 James Parker Jr.
 Sheila and Michael Parks
 Ted and Pamela Parrot

Susan and William Peck
Robert and Janet Peper
Todd Petzel and Kate Dressel
Michael Plummer and Linda Voss-Plummer
Ken Polakowski and Kay Wenger
Roy and Barbara W. Pollock
James Polus and Jane M. Mueller
Anne and Warren Price
Dr./Mrs. L. David Pye
David and Judy Quattrone
Marilynn A. Quick
Moishe Levi Ragieme, R.N.
Mr./Mrs. William G. Rau
Andrew Reeves and Michelle Boucher
Rita Rhodes and Felix P. Kapron
Mr./Mrs. H. Robert Richter
Susan D. Robinson
Michael and Bette Rogers
Timothy W. and Michelle L. Rogers
Thomas and Lauril Rohde
Eric D. Rosenberg
Marcy and Joel Rubin
Debra and Kenneth Russo
Dr. Naoyuki G. Saito and Richard P. Jasper
Dr. Philip A. Sandberg and Dr. Susan M.
Brown-Sandberg
Carl and Dru Sanford
Heather and Jeff Scherb
Christa and Dieter Scherer
David and Sandra Schimmel
Mark A. Schlechter and Christine Valkenburgh
Deborah and Timothy F. Schmidle
George Schneiderman and Elizabeth Stein
Mr./Mrs. Paul Schnipelsky
John Schoonover and Joan Coveleskie
Peggy Schuckers
Mark and Dana Schwartz
Dr./Mrs. David F. Sciortino
Richard and Mary K. Seager
Saurabh and Payal Shah
Curt and Paula Shanahan
Sonjia M. Shay and Eugene F. Sensel Jr.
Matthew and Rachel Sherman
Michael Sinkew and Eric G. Murillo
Brenda J. Smith
Dana Smith
Doug and Paula Smith
Dr. J. D. Smith
Gail and Louis Snitkoff
Monica and Raymond Sommerville
Joanne Sonsire Gardner and Thomas Sonsire
Gardner
Dr./Mrs. William A. Sorber
Harry and Erna Sowersby
Mark and Lao Spetseris

Simon A. and Mary St. Laurent
Aafke and Tammo Steenhuis
Larry and Marion Steiner
Lisa M. Stephenson
Monty and Marian H. Stephenson
Geraldine Storch
Mark Stoughton
Connie and Russell Striff
Steven P. and Betty J. Suttle
Frank S. Swain
Dr. Wayne C. Templer
Patrick Tepesch and Kate Paterson
Mr./Mrs. John W. Thoman
Leo C. and Judith A. Thomas
Drs. Margene and Robert Tichane
Mr./Mrs. August V. Titi
Mr./Mrs. Stephen Toombs
A. A. Trinidad Jr.
Mr./Mrs. William C. Ughetta
Wallace and Norma Jean Venable
Mr./Mrs. William G. Venema
Vinehurst Inn Rooms and Suites
Mr./Mrs. Louis Vogel
Fritz F. and Linda C. Wasser
Thomas C. Weiler
Jamie S. Weiner, M.D., FACP
Janice Weisenfeld
Robert and Jill White
Craig and Karen Willand
Jackie and Misty Williams
Meredith Williams and Gladys Birdsall
Duane Willis and Barbara Millier-Willis
Susan M. Wise and John Walzak
Bob and Barb Wood
Ying Wu
Joanna Wurtele
Mr./Mrs. Kogo Yamaguchi
Donna A. Yeman
John A. Zanetti and Shay Rumsey
Connie Zehr
Susan A. Zeller
David and Judith Zucker

* Gift matched by a corporate matching gift

Financial Report

Operating Results

The Museum ended fiscal year 2011 with annual operating revenues exceeding operating expenses by \$1.4 million. The economy as a whole has had a tepid performance, and thus we are especially pleased with the financial results. The abbreviated version of the Museum's operating results shown below reflects 2011 year-end results for the general operating fund in comparison with last year.

	<u>2011</u>	<u>2010</u>
Total revenues and other funding	\$ 39,299	\$ 36,945
Total expenses	37,885	34,761
Operating surplus	<u>\$ 1,414</u>	<u>\$ 2,184</u>

Other important results for 2011 were:

1. Museum visitation grew three percent above 2010 attendance to 399,000. A total of 354,000 guests toured the Museum in 2011. Individual and family visitation was up one percent from 2010, and tour groups were up nine percent. In addition, 11,000 schoolchildren visited the Museum, and 34,000 people attended a rich series of education programs and public programs.
2. Visitor revenues grew nine percent over last year to \$10 million. GlassMarket revenues were strong throughout the year and exceeded \$5 million, a milestone in retail sales for the Museum, a 13 percent increase over 2010. An additional milestone was for food services, which exceeded \$1 million in sales for the first time.
3. Total glass and library acquisitions were \$2 million, and glass and library materials valued at over \$3 million were donated to the Museum's collections.
4. Cash donations totaled \$975,000 in 2011. Ennion Society members contributed \$610,000 toward glass acquisitions, glass auctions on Celebrity cruises raised \$165,000 for studio scholarships, and an additional \$200,000 was donated for studio scholarships, financial support of specific initiatives, and other glass and library acquisition funds. The Museum experienced a very strong year of development activities and donor support.
5. The Museum Operating Reserve Fund balance at the end of the year was \$21.1 million, up from \$20.6 million at the end of last year. The fund recorded gains in investments of \$481,000 during 2011.

The Corning Museum of Glass
Consolidated Statement of Activities
Years Ended December 31, 2011 and 2010
(Dollars in Thousands)

The following comparative list consolidates the Museum's unrestricted, temporarily restricted, and permanently restricted activities (2011 unaudited).

	<u>2011</u>	<u>2010</u>
Revenue, gains, and other support:		
Contributions from Corning Incorporated	\$ 26,217	\$ 25,082
Admissions	2,599	2,504
Sales from merchandising and food services	6,424	5,693
Studio, education, and outreach	2,872	2,837
Other revenues and contributions	1,501	1,017
Interest and dividends	536	508
Net appreciation (depreciation) of investments	8	1,642
Total revenue, gains, and other support	<u>40,157</u>	<u>39,283</u>
Expenses:		
Program services:		
Curatorial, exhibitions, and research	5,433	5,210
Studio, education, and outreach	6,538	6,317
Library services	1,843	1,831
Publications	321	366
Visitor services	2,270	2,173
Merchandising and food services	4,039	3,738
Cost of sales from merchandising and food	3,038	2,722
Total program services	<u>23,482</u>	<u>22,357</u>
Support services:		
General administration	8,646	7,816
Marketing and public relations	2,428	2,237
Information services	1,287	1,196
Total support services	<u>12,361</u>	<u>11,249</u>
Acquisitions:		
Purchases for the glass collection	1,715	893
Purchases for the library collection	252	261
Total acquisitions	<u>1,967</u>	<u>1,154</u>
Total expenses	<u>37,810</u>	<u>34,760</u>
Other changes in net assets (FAS 158):	<u>(1,978)</u>	<u>(592)</u>
Change in net assets	370	3,931
Net assets at beginning of year	<u>28,218</u>	<u>24,287</u>
Net assets at end of year	<u>\$ 28,588</u>	<u>\$ 28,218</u>

The Museum concluded 2011 with consolidated financials reporting a one percent increase in net assets of \$28.6 million. The Museum's net assets at December 31 are categorized as follows:

	<u>2011</u>	<u>2010</u>
Unrestricted	\$26,014	\$25,995
Temporarily restricted	1,073	734
Permanently restricted	1,501	1,489
Total net assets	<u>\$28,588</u>	<u>\$28,218</u>

Looking Forward

On the heels of its 60th anniversary in 2011, the Museum is well positioned to move into 2012. With the three-year strategic plan providing guidance for the 2012 budgeting process, the operating budget has been set with expectations for continued growth in visitation, earned revenues, and support from Corning Incorporated. Operating and acquisition expenditures are expected to total \$42.5 million, a 12 percent increase over 2011.

The primary fiscal goals for the Museum remain preserving core mission operations, managing resources to the annual projected revenue, and ensuring the future stability of the institution by protecting the Museum Operating Reserve Fund.

Lastly, Corning Incorporated has announced plans to convert the former Steuben Glass factory into a new wing for The Corning Museum of Glass. Corning Incorporated will fund the project and continue its growing support of annual operations. All current areas of the Museum are to remain open during the three-year construction project.

Audited Financial Statements

The complete financial records of the Museum are audited on an annual basis. Upon completion of the audit, the 2011 audited financial statements and accompanying notes to the financial statements will be available on the Museum's Web site, www.cmog.org, or upon request from the Director of Finance at (607) 937-5371.

Nancy J. Earley
*Senior Director, Administration
and Finance*



The Corning Museum of Glass
Corning, New York 14830-2253
www.cmog.org